



Anti-RAB7 Rabbit pAb

WLR0181

For Research Use Only. Not For Use In Diagnostic Procedures

Product Information

Product name	Anti-RAB7 Rabbit pAb	
Source	Rabbit	
Species reactivity	Human, Mouse, Rat	
Tested applications	WB	1:500-1:1000
	IHC, IF	1:50-1:200
Cellular localization	Cytoplasmic vesicle, Endosome, Lipid droplet, Lysosome, Membrane, Mitochondrion.	
Pack size	50/100/200/500/1000µl	
Storage	Store at -20°C. Avoid freeze/thaw cycles.	
Storage buffer	Supplied in 20 mM phosphate (pH 7.5), 150 mM NaCl, 100 µg/ml BSA, 50% glycerol and less than 0.02% sodium azide	

General Information

Background

RAB7A, Also known as RAB7, it belongs to the small GTPase superfamily and Rab family. It is a small GTPase that cycles between an active GTP binding state and an inactive GDP binding state, and is an important regulatory factor for vesicle transport. In its active state, it binds to various effector proteins and plays a key role in regulating lysosomal transport. It cascade controls early to late endosome maturation, microtubule negative and positive end guided endosome migration and localization, and endosome lysosome transport through interactions with different proteins. RAB7A plays a central role in many other cellular and physiological events, such as growth factor mediated cell signaling, nutrient uptake mediated by nutrient transporters, neurotrophic factor transport in neuronal axons, and lipid metabolism. It also participates in regulating some special intracellular membrane transport, such as the maturation of melanosomes, pathogen induced phagosomes (or vacuoles), and autophagosomes.

Immunogen

Polyclonal antibody is produced by immunizing animals with a synthetic peptide of RAB7.

Purification

Polyclonal antibody was purified by immunogen affinity chromatography.

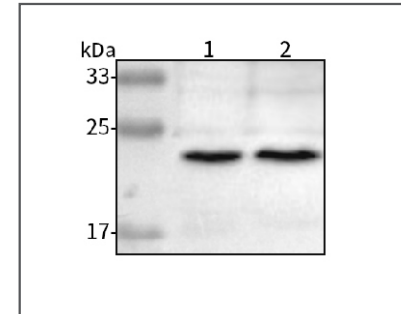


Anti-RAB7 Rabbit pAb

WLR0181

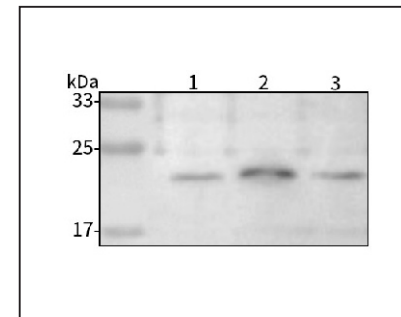
For Research Use Only. Not For Use In Diagnostic Procedures

Product Images



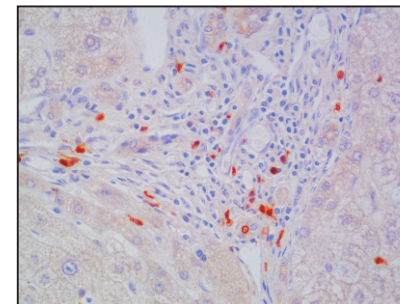
Western blot-Anti-RAB7 pAb

Lane 1: Human A2780 cell lysate
 Lane 2: Rat RSC96 cell lysate
 All lanes: Anti-RAB7 at 1:1000 dilution
 Lysates/proteins at 20-50 µg per lane.
 Predicted band size: 23 kDa
 Observed band size: 23 kDa



Western blot-Anti-RAB7 pAb

Lane 1: Mouse liver tissue lysate
 Lane 2: Rat lung tissue lysate
 Lane 3: Rat colon tissue lysate
 All lanes: Anti-RAB7 at 1:1000 dilution
 Lysates/proteins at 20-50 µg per lane.
 Predicted band size: 23 kDa
 Observed band size: 23 kDa



Immunohistochemistry-Anti-RAB7 pAb

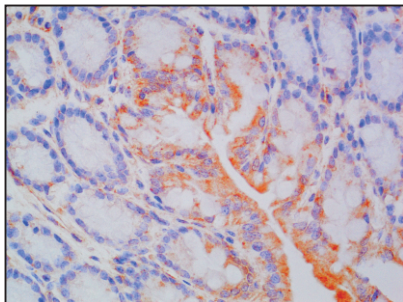
Immunohistochemical analysis of paraffin-embedded human liver cancer using anti-RAB7 Rabbit Antibody at 1:100 dilution.
 Perform heat mediated antigen retrieval with Tris-EDTA buffer pH 9.0

Anti-RAB7 Rabbit pAb

WLR0181

For Research Use Only. Not For Use In Diagnostic Procedures

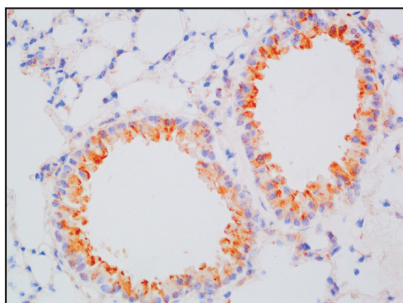
Product Information



Immunohistochemistry-Anti-RAB7 pAb

Immunohistochemical analysis of paraffin-embedded mouse intestine using anti-RAB7 Rabbit Antibody at 1:100 dilution.

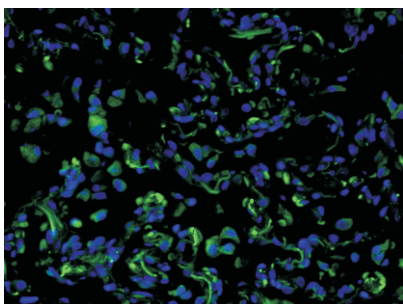
Perform heat mediated antigen retrieval with Tris-EDTA buffer pH 9.0



Immunohistochemistry-Anti-RAB7 pAb

Immunohistochemical analysis of paraffin-embedded rat lung using anti-RAB7 Rabbit Antibody at 1:100 dilution.

Perform heat mediated antigen retrieval with Tris-EDTA buffer pH 9.0



Immunofluorescence-Anti-RAB7 pAb

Immunofluorescence analysis of paraffin-embedded human lung cancer using anti-RAB7 Rabbit Antibody at 1:100 dilution.

Perform heat mediated antigen retrieval with Tris-EDTA buffer pH 9.0