

## Anti-LXR alpha Rabbit pAb



WL05098

For Research Use Only. Not For Use In Diagnostic Procedures

## Product Information

<b>Product name</b>	Anti-LXR alpha Rabbit pAb	
<b>Source</b>	Rabbit	
<b>Species reactivity</b>	Human, Mouse, Rat	
<b>Tested applications</b>	WB	1:1000-1:2000
	IHC, IF	1:100-1:500
<b>Cellular localization</b>	Nucleus, Cytoplasm.	
<b>Pack size</b>	50/100/200/500/1000µl	
<b>Storage</b>	Store at -20°C. <b>Avoid freeze/thaw cycles.</b>	
<b>Storage buffer</b>	Supplied in 20 mM phosphate (pH 7.5), 150 mM NaCl, 100 µg/ml BSA, 50% glycerol and less than 0.02% sodium azide	

## General Information

**Background** NR1H3, also known as LXRA, is a liver X receptors, which form a subfamily of the nuclear receptor superfamily and are key regulators of macrophage function, controlling transcriptional programs involved in lipid homeostasis and inflammation. It's also a ligand-activated LXRs and forms heterodimers with retinoid X receptor, then participates in regulating expression of target genes containing LXR response elements.

**Immunogen** Polyclonal antibody is produced by immunizing animals with a synthetic peptide of LXR alpha.

**Purification** Polyclonal antibody was purified by Protein A affinity chromatography.

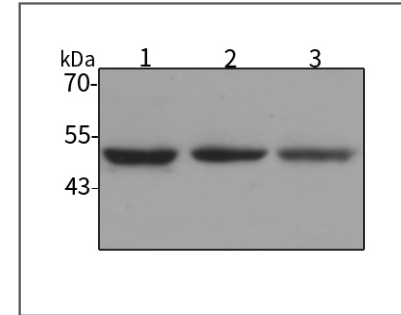
## Anti-LXR alpha Rabbit pAb



WL05098

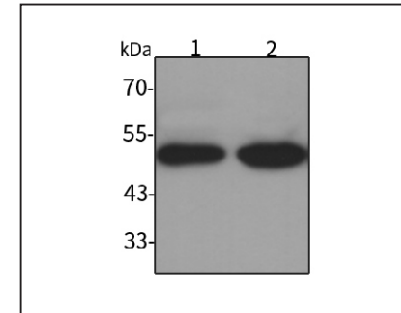
For Research Use Only. Not For Use In Diagnostic Procedures

## Product Images



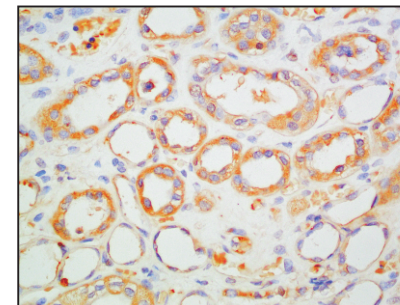
## Western blot-Anti-LXR alpha pAb

Lane 1: Human MBA-MD-231 cell lysate  
 Lane 2: Human A549 cell lysate  
 Lane 3: Human HUVEC cell lysate  
 All lanes: Anti-LXR alpha at 1:1000 dilution  
 Lysates/proteins at 20-50 µg per lane.  
 Predicted band size: 50 kDa  
 Observed band size: 50 kDa



## Western blot-Anti-LXR alpha pAb

Lane 1: Mouse liver tissue lysate  
 Lane 2: Rat liver tissue lysate  
 All lanes: Anti-LXR alpha at 1:1000 dilution  
 Lysates/proteins at 20-50 µg per lane.  
 Predicted band size: 50 kDa  
 Observed band size: 50 kDa



## Immunohistochemistry-Anti-LXR alpha pAb

Immunohistochemical analysis of paraffin-embedded human kidney cancer using anti-LXR alpha Rabbit Antibody at 1:100 dilution. Perform heat mediated antigen retrieval with Tris-EDTA buffer pH 9.0

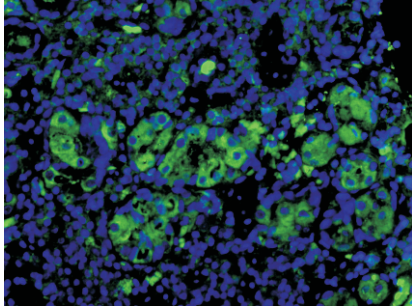
## Anti-LXR alpha Rabbit pAb



WL05098

For Research Use Only. Not For Use In Diagnostic Procedures

### Product Information



#### Immunofluorescence-Anti-LXR alpha pAb

Immunofluorescence analysis of paraffin-embedded human kidney cancer using anti-LXR alpha Rabbit Antibody at 1:100 dilution.

Perform heat mediated antigen retrieval with Tris-EDTA buffer pH 9.0