

Anti-Chd1 Rabbit pAb



WL03547

For Research Use Only. Not For Use In Diagnostic Procedures

Product Information

Product name	Anti-Chd1 Rabbit pAb	
Source	Rabbit	
Species reactivity	Human, Mouse, Rat	
Tested applications	WB	1:1000-1:2000
	IHC, IF	1:100-1:500
Cellular localization	Cytoplasm. Nucleus.	
Pack size	50/100/200/500/1000µl	
Storage	Store at -20°C. Avoid freeze/thaw cycles.	
Storage buffer	Supplied in 20 mM phosphate (pH 7.5), 150 mM NaCl, 100 µg/ml BSA, 50% glycerol and less than 0.02% sodium azide	

General Information

Background	The characteristic of the CHD protein family is the presence of chromatin (chromatin tissue modifier) domains and SNF2 related helicase/ATPase domains. CHD1 is an ATP dependent chromatin remodeling factor that serves as a substrate recognition component for the transcriptional regulatory histone acetylation (HAT) complex SAGA. CHD1 regulates the transcription of polymerase II, which is necessary for the effective transcription of RNA polymerase I. More specifically, it is the polymerase I transcription termination step and can negatively regulate DNA replication. CHD1 is required for bridging SNF2, FACT complex, PAF complex, and U2 snRNP complex to H3K4me3.
Immunogen	Polyclonal antibody is produced by immunizing animals with a synthetic peptide of Chd1.
Purification	Polyclonal antibody was purified by Protein A affinity chromatography.

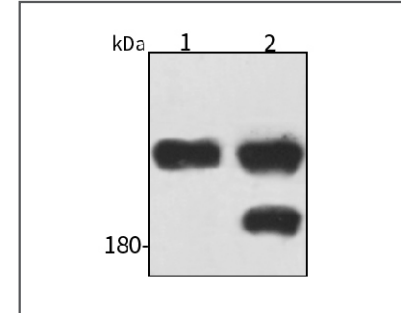
Anti-Chd1 Rabbit pAb



WL03547

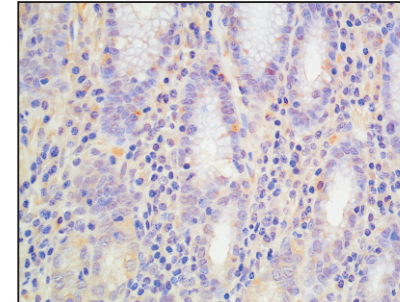
For Research Use Only. Not For Use In Diagnostic Procedures

Product Images



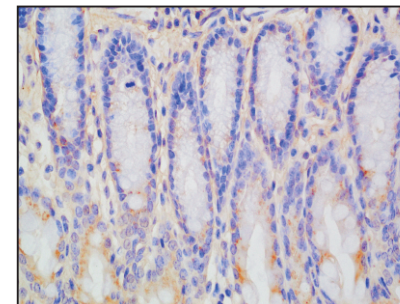
Western blot-Anti-Chd1 pAb

Lane 1: Human HeLa cell lysate
 Lane 2: Human HEK293 cell lysate
 All lanes: Anti-Chd1 at 1:1000 dilution
 Lysates/proteins at 20-50 µg per lane
 Predicted band size: 197 kDa
 Observed band size: 250 kDa



Immunohistochemistry-Anti-Chd1 pAb

Immunohistochemical analysis of paraffin-embedded human stomach cancer using anti-Chd1 Rabbit Antibody at 1:100 dilution.
 Perform heat mediated antigen retrieval with Tris-EDTA buffer pH 9.0



Immunohistochemistry-Anti-Chd1 pAb

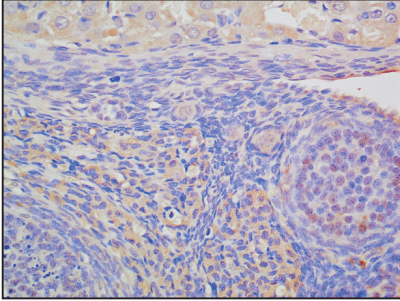
Immunohistochemical analysis of paraffin-embedded mouse intestine using anti-Chd1 Rabbit Antibody at 1:100 dilution.
 Perform heat mediated antigen retrieval with Tris-EDTA buffer pH 9.0

Anti-Chd1 Rabbit pAb

WL03547

For Research Use Only. Not For Use In Diagnostic Procedures

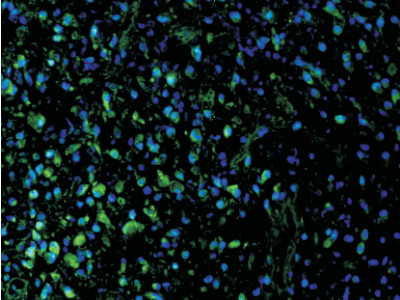
Product Information



Immunohistochemistry-Anti-Chd1 pAb

Immunohistochemical analysis of paraffin-embedded rat ovary using anti-Chd1 Rabbit Antibody at 1:100 dilution.

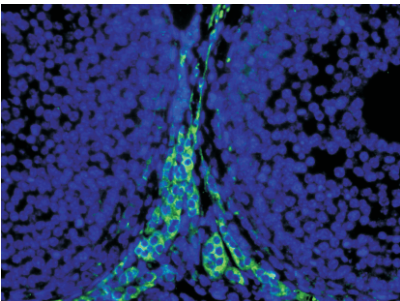
Perform heat mediated antigen retrieval with Tris-EDTA buffer pH 9.0



Immunofluorescence-Anti-Chd1 pAb

Immunofluorescence analysis of paraffin-embedded human brain glioma using anti-Chd1 Rabbit Antibody at 1:100 dilution.

Perform heat mediated antigen retrieval with Tris-EDTA buffer pH 9.0



Immunofluorescence-Anti-Chd1 pAb

Immunofluorescence analysis of paraffin-embedded mouse ovary using anti-Chd1 Rabbit Antibody at 1:100 dilution.

Perform heat mediated antigen retrieval with Tris-EDTA buffer pH 9.0