

Anti-Mast Cell Tryptase Rabbit pAb



WL04851

For Research Use Only. Not For Use In Diagnostic Procedures

Product Information

Product name	Anti-Mast Cell Tryptase Rabbit pAb	
Source	Rabbit	
Species reactivity	Human, Mouse, Rat	
Tested applications	WB	1:1000-1:2000
	IHC	1:500
	IF	1:100-1:500
Cellular localization	Secreted	
Pack size	50/100/200/500/1000µl	
Storage	Store at -20°C. Avoid freeze/thaw cycles.	
Storage buffer	Supplied in 20 mM phosphate (pH 7.5), 150 mM NaCl, 100 µg/ml BSA, 50% glycerol and less than 0.02% sodium azide	

General Information

Background TPSAB1 is also named as TPS1, TPS2, TPSB1. Tryptases comprise a family of trypsin-like serine proteases, the peptidase family S1. Tryptases are enzymatically active only as heparin-stabilized tetramers, and they are resistant to all known endogenous proteinase inhibitors. It is the major neutral protease present in mast cells and secreted upon the coupled activation-degranulation response of this cell type.

Immunogen Polyclonal antibody is produced by immunizing animals with a synthetic peptide of Mast Cell Tryptase.

Purification Polyclonal antibody was purified by Protein A affinity chromatography.

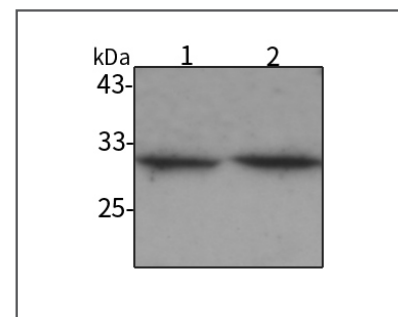
Anti-Mast Cell Tryptase Rabbit pAb



WL04851

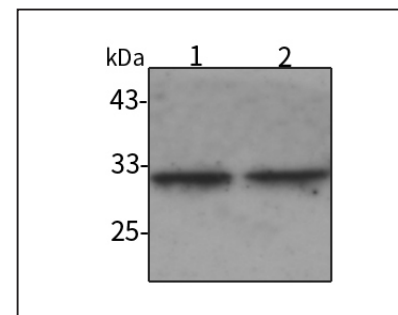
For Research Use Only. Not For Use In Diagnostic Procedures

Product Images



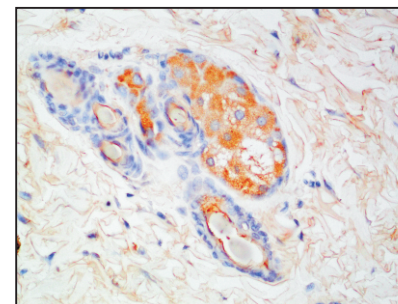
Western blot-Anti-Mast Cell Tryptase pAb

Lane 1: Human HeLa cell lysate
 Lane 2: Human HEK-293 cell lysate
 All lanes: Anti-Mast Cell Tryptase at 1:1000 dilution
 Lysates/proteins at 20-50 µg per lane.
 Predicted band size: 30 kDa
 Observed band size: 33 kDa



Western blot-Anti-Mast Cell Tryptase pAb

Lane 1: Mouse lung tissue lysate
 Lane 2: Rat colon tissue lysate
 All lanes: Anti-Mast Cell Tryptase at 1:1000 dilution
 Lysates/proteins at 20-50 µg per lane.
 Predicted band size: 30 kDa
 Observed band size: 33 kDa



Immunohistochemistry-Anti-Mast Cell Tryptase pAb

Immunohistochemical analysis of paraffin-embedded mouse skin using anti-Mast Cell Tryptase Rabbit Antibody at 1:500 dilution. Perform heat mediated antigen retrieval with Tris-EDTA buffer pH 9.0

Anti-Mast Cell Tryptase Rabbit pAb

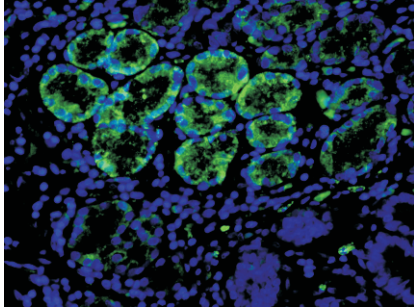
Wanleibio



WL04851

For Research Use Only. Not For Use In Diagnostic Procedures

Product Information



Immunofluorescence-Anti-Mast Cell Tryptase pAb

Immunofluorescence analysis of paraffin-embedded human stomach cancer using anti-Mast Cell Tryptase Rabbit Antibody at 1:100 dilution. Perform heat mediated antigen retrieval with Tris-EDTA buffer pH 9.0