

## Anti-DEP1 Rabbit pAb



WL00279

For Research Use Only. Not For Use In Diagnostic Procedures

## Product Information

<b>Product name</b>	Anti-DEP1 Rabbit pAb	
<b>Source</b>	Rabbit	
<b>Species reactivity</b>	Human, Mouse, Rat	
<b>Tested applications</b>	WB	1:1000-1:2000
	IHC	1:500
	IF	1:100-1:500

**Cellular localization** Cell membrane. Cell junction.

**Pack size** 50/100/200/500/1000µl

**Storage** Store at -20°C. **Avoid freeze/thaw cycles.**

**Storage buffer** Supplied in 20 mM phosphate (pH 7.5), 150 mM NaCl, 100 µg/ml BSA, 50% glycerol and less than 0.02% sodium azide

## General Information

**Background** PTPRJ, also known as CD148 and DEP1, encodes a protein that is a member of the protein tyrosine phosphatase (PTP) family. PTP is a signaling molecule that regulates various cellular processes, including cell growth, differentiation, mitotic cycle, and oncogenic transformation. This protein is present in all hematopoietic lineages and has been shown to negatively regulate T cell receptor signaling by interfering with phospholipase C Gamma 1 and phosphorylation of T cell activation linkers. This protein can also dephosphorylate PDGF β receptors and may participate in UV induced signal transduction. PTPRJ plays a role in cell adhesion, migration, proliferation, and differentiation, and is also involved in vascular

**Immunogen** Polyclonal antibody is produced by immunizing animals with a synthetic peptide of DEP1.

**Purification** Polyclonal antibody was purified by Protein A affinity chromatography.

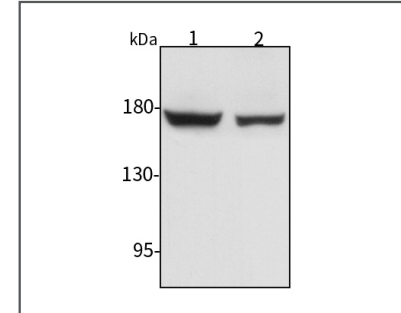
## Anti-DEP1 Rabbit pAb



WL00279

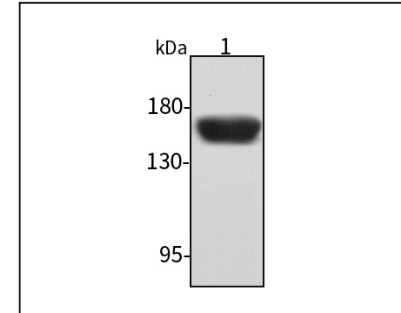
For Research Use Only. Not For Use In Diagnostic Procedures

## Product Images



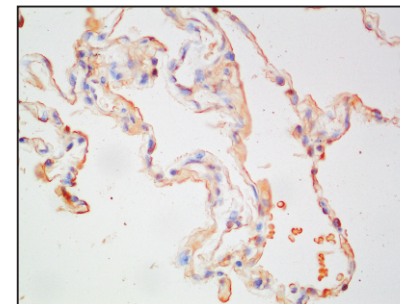
## Western blot-Anti-DEP1 pAb

Lane 1: Human HCT116 cell lysate  
 Lane 2: Human MDA-MB-231 cell lysate  
 All lanes: Anti-DEP1 at 1:1000 dilution  
 Lysates/proteins at 20-50 µg per lane  
 Predicted band size: 146 kDa  
 Observed band size: 146-250 kDa



## Western blot-Anti-DEP1 pAb

Lane 1: Mouse liver tissue lysate  
 All lanes: Anti-DEP1 at 1:1000 dilution  
 Lysates/proteins at 20-50 µg per lane  
 Predicted band size: 146 kDa  
 Observed band size: 146-250 kDa



## Immunohistochemistry-Anti-DEP1 pAb

Immunohistochemical analysis of paraffin-embedded human lung cancer using anti-DEP1 Rabbit Antibody at 1:500 dilution.  
 Perform heat mediated antigen retrieval with Tris-EDTA buffer pH 9.0

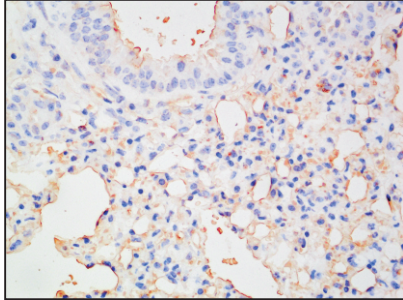
## Anti-DEP1 Rabbit pAb



WL00279

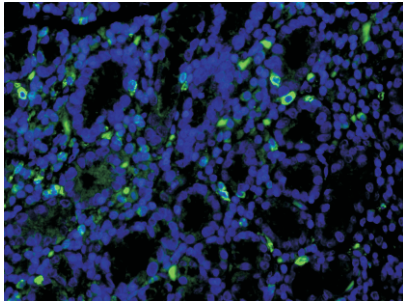
For Research Use Only. Not For Use In Diagnostic Procedures

### Product Information



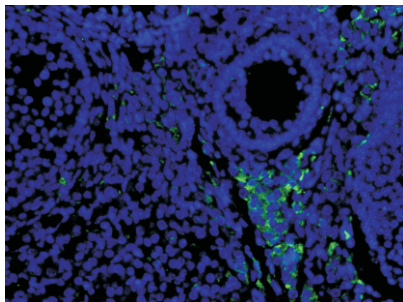
#### Immunohistochemistry-Anti-DEP1 pAb

Immunohistochemical analysis of paraffin-embedded mouse lung using anti-DEP1 Rabbit Antibody at 1:500 dilution.  
Perform heat mediated antigen retrieval with Tris-EDTA buffer pH 9.0



#### Immunofluorescence-Anti-DEP1 pAb

Immunofluorescence analysis of paraffin-embedded human stomach cancer using anti-DEP1 Rabbit Antibody at 1:100 dilution.  
Perform heat mediated antigen retrieval with Tris-EDTA buffer pH 9.0



#### Immunofluorescence-Anti-DEP1 pAb

Immunofluorescence analysis of paraffin-embedded mouse ovary using anti-DEP1 Rabbit Antibody at 1:100 dilution.  
Perform heat mediated antigen retrieval with Tris-EDTA buffer pH 9.0