

## Anti-Xct/SLC7A11 Rabbit pAb



WLA0228

For Research Use Only. Not For Use In Diagnostic Procedures

## Product Information

<b>Product name</b>	Anti-Xct/SLC7A11 Rabbit pAb	
<b>Source</b>	Rabbit	
<b>Species reactivity</b>	Human, Mouse, Rat	
<b>Tested applications</b>	WB	1:500-1:1000
	IF	1:50-1:200

**Cellular localization** Cell membrane, Cell projection, Lysosome.

**Pack size** 50/100/200/500/1000µl

**Storage** Store at -20°C. **Avoid freeze/thaw cycles.**

**Storage buffer** Supplied in 20 mM phosphate (pH 7.5), 150 mM NaCl, 100 µg/ml BSA, 50% glycerol and less than 0.02% sodium azide

## General Information

**Background** SLC7A11 (also known as xCT) is a membrane transporter protein with high specificity for cysteine and glutamate. It promotes glutathione synthesis by consuming cysteine and simultaneously releasing glutamate. This in turn protects cells from oxidative stress, maintains cellular redox balance, and prevents cell death caused by lipid peroxidation. This protein has been identified as the primary mediator for the fusion and entry of Kaposi's sarcoma associated herpesvirus into cells. It is overexpressed in various malignant tumors and closely related to the growth, prognosis, metastasis, and treatment response of various cancers, including lung cancer.

**Immunogen** Polyclonal antibody is produced by immunizing animals with a synthetic peptide of Xct/SLC7A11.

**Purification** Polyclonal antibody was purified by immunogen affinity chromatography.

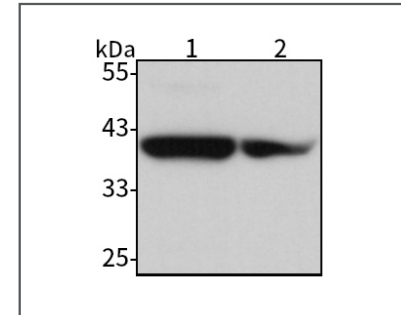
## Anti-Xct/SLC7A11 Rabbit pAb



WLA0228

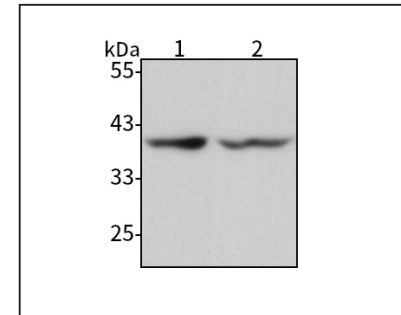
For Research Use Only. Not For Use In Diagnostic Procedures

## Product Images



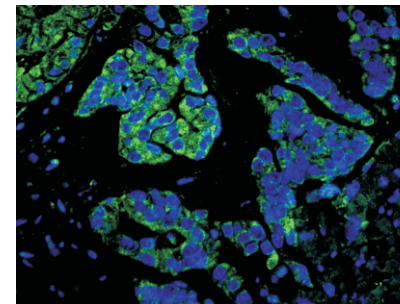
## Western blot-Anti-Xct/SLC7A11 pAb

Lane 1: Human HepG2 cell lysate  
 Lane 2: Human A549 cell lysate  
 All lanes: Anti-Xct/SLC7A11 at 1:1000 dilution  
 Lysates/proteins at 20-50 µg per lane  
 Predicted band size: 55 kDa  
 Observed band size: 35-55 kDa



## Western blot-Anti-Xct/SLC7A11 pAb

Lane 1: Mouse brain tissue lysate  
 Lane 2: Rat cerebellum tissue lysate  
 All lanes: Anti-Xct/SLC7A11 at 1:1000 dilution  
 Lysates/proteins at 20-50 µg per lane  
 Predicted band size: 55 kDa  
 Observed band size: 35-55 kDa



## Immunofluorescence-Anti-Xct/SLC7A11 pAb

Immunofluorescence analysis of paraffin-embedded human pancreas cancer using anti-Xct/SLC7A11 Rabbit Antibody at 1:100 dilution. Perform heat mediated antigen retrieval with Tris-EDTA buffer pH 9.0