

## Anti-RANTES/CCL5 Rabbit pAb



WL03557

For Research Use Only. Not For Use In Diagnostic Procedures

## Product Information

<b>Product name</b>	Anti-RANTES/CCL5 Rabbit pAb	
<b>Source</b>	Rabbit	
<b>Species reactivity</b>	Mouse, Rat	
<b>Tested applications</b>	Western blot	1:1000-1:2000

*\*Suggested working dilutions are given as a guide only. It is recommended that the user titrates the product for use in their own experiment using appropriate negative and positive controls.*

<b>Molecular Wt.</b>	Predicted band size: 10 kDa
	Observed band size: 15 kDa

**Pack size** 50/100/200/500/1000 $\mu$ l

**Storage** Store at -20°C. **Avoid freeze/thaw cycles.**

**Storage buffer** Supplied in 20 mM phosphate (pH 7.5), 150 mM NaCl, 100  $\mu$ g/ml BSA, 50% glycerol and less than 0.02% sodium azide

## General Information

**Background** RANTES/CCL5(Regulated upon activation,T cell expressed and secreted)is a member of the “C-C” or  $\beta$  family of chemokines that induce inflammation and are associated with a number of inflammatory disorders.It functions as one of the natural ligands for the chemokine receptor chemokine(C-C motif)receptor 5(CCR5),and it suppresses in vitro replication of the R5 strains of HIV-1,which use CCR5 as coreceptor.Alternative splicing results in multiple transcript variants that encode different isoforms.

**Immunogen** Polyclonal antibody is produced by immunizing animals with a synthetic peptide of RANTES/CCL5.

**Purification** Polyclonal antibody was purified by Protein A affinity chromatography.

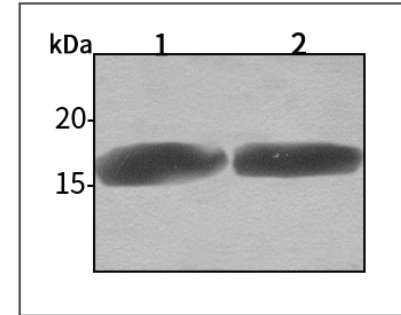
## Anti-RANTES/CCL5 Rabbit pAb



WL03557

For Research Use Only. Not For Use In Diagnostic Procedures

## Product Images



Western blot-Anti-RANTES/CCL5 pAb

Lane 1: Mouse kidney tissue lysate 30 $\mu$ gLane 2: Rat stomach tissue lysate 30 $\mu$ g

Separation gel: 15% polyacrylamide

Electrophoresis: 100V, 4°C, 3h

Transmembrane: 100V, 4°C, 1h

Blocking: 5% w/v nonfat dry milk, 1 $\times$  TBST, at RT with gentle shaking

Primary antibody: 1:500 in blocking buffer, 4°C, overnight

Secondary antibody (WLA023a) : 1:5000-1:10000, 45min

Detection: ECL, 30s-2min