

Anti-NOTCH4 Rabbit pAb



WL00379

For Research Use Only. Not For Use In Diagnostic Procedures

Product Information

Product name	Anti-NOTCH4 Rabbit pAb	
Source	Rabbit	
Species reactivity	Human, Mouse, Rat	
Tested applications	WB	1:1000-1:2000
	IHC	1:500
	IF	1:100-1:500

Cellular localization Cell membrane and Nucleus

Pack size 50/100/200/500/1000µl

Storage Store at -20°C. **Avoid freeze/thaw cycles.**

Storage buffer Supplied in 20 mM phosphate (pH 7.5), 150 mM NaCl, 100 µg/ml BSA, 50% glycerol and less than 0.02% sodium azide

General Information

Background NOTCH family of proteins. Members of this Type I transmembrane protein family share structural characteristics including an extracellular domain consisting of multiple epidermal growth factor-like (EGF) repeats, and an intracellular domain consisting of multiple different domain types. Notch signaling is an evolutionarily conserved intercellular signaling pathway that regulates interactions between physically adjacent cells through binding of Notch family receptors to their cognate ligands. Upon ligand activation through the released notch intracellular domain (NICD) it forms a transcriptional activator complex with RBPJ/RBPSUH and activates genes of the enhancer of split locus. Affects the implementation of

Immunogen Polyclonal antibody is produced by immunizing animals with a synthetic peptide of NOTCH4.

Purification Polyclonal antibody was purified by Protein A affinity chromatography.

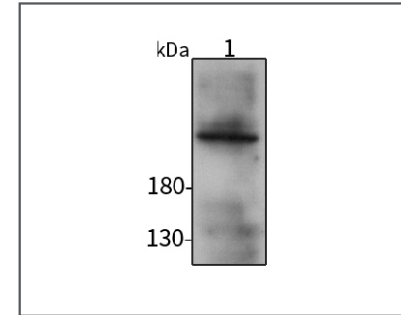
Anti-NOTCH4 Rabbit pAb



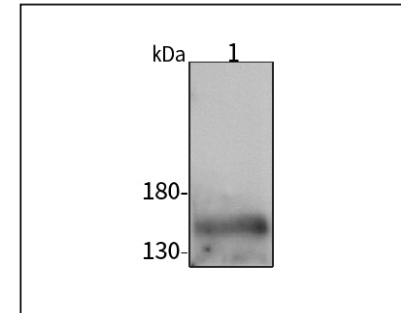
WL00379

For Research Use Only. Not For Use In Diagnostic Procedures

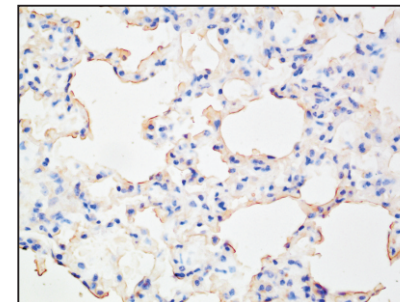
Product Images

**Western blot-Anti-NOTCH4 pAb**

Lane 1: Human Hela cell lysate
All lanes: Anti-NOTCH4 at 1:1000 dilution
 Lysates/proteins at 20-50 µg per lane.
 Predicted band size: 210 kDa
 Observed band size: 150,210 kDa

**Western blot-Anti-NOTCH4 pAb**

Lane 1: Mouse lung tissue lysate
All lanes: Anti-NOTCH4 at 1:1000 dilution
 Lysates/proteins at 20-50 µg per lane.
 Predicted band size: 210 kDa
 Observed band size: 150,210 kDa

**Immunohistochemistry-Anti-NOTCH4 pAb**

Immunohistochemical analysis of paraffin-embedded mouse lung using anti-NOTCH4 Rabbit Antibody at 1:500 dilution.
 Perform heat mediated antigen retrieval with Tris-EDTA buffer pH 9.0

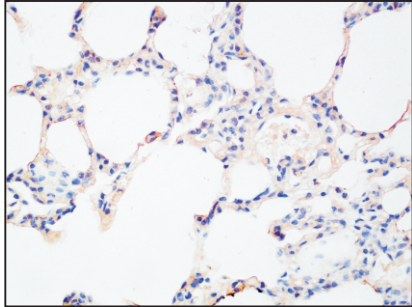
Anti-NOTCH4 Rabbit pAb



WL00379

For Research Use Only. Not For Use In Diagnostic Procedures

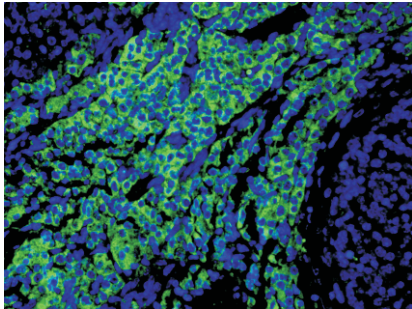
Product Information



Immunohistochemistry-Anti-NOTCH4 pAb

Immunohistochemical analysis of paraffin-embedded rat lung using anti-NOTCH4 Rabbit Antibody at 1:500 dilution.

Perform heat mediated antigen retrieval with Tris-EDTA buffer pH 9.0



Immunofluorescence-Anti-NOTCH4 pAb

Immunofluorescence analysis of paraffin-embedded human colon cancer using anti-NOTCH4 Rabbit Antibody at 1:100 dilution.

Perform heat mediated antigen retrieval with Tris-EDTA buffer pH 9.0