

Anti- CXCR2 Rabbit pAb



WL02747

For Research Use Only. Not For Use In Diagnostic Procedures

Product Information

Product name	Anti- CXCR2 Rabbit pAb	
Source	Rabbit	
Species reactivity	Human	
Tested applications	WB	1:500-1:1000
	IHC	1:50-1:200
Cellular localization	Cell membrane.	
Pack size	50/100/200/500/1000µl	
Storage	Store at -20°C. Avoid freeze/thaw cycles.	
Storage buffer	Supplied in 20 mM phosphate (pH 7.5), 150 mM NaCl, 100 µg/ml BSA, 50% glycerol and less than 0.02% sodium azide	

General Information

Background Cd182 belongs to the G-protein coupled receptor 1 family. It is a receptor for interleukin-8 which is a powerful neutrophil chemotactic factor. It binds to IL8 with high affinity, and transduces the signal through a G-protein activated second messenger system. It binds to IL-8 with high affinity.

Immunogen Polyclonal antibody is produced by immunizing animals with a synthetic peptide of CXCR2.

Purification Polyclonal antibody was purified by immunogen affinity chromatography.

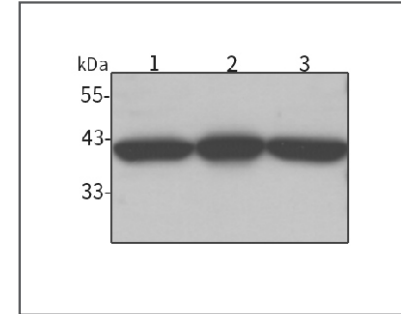
Anti- CXCR2 Rabbit pAb



WL02747

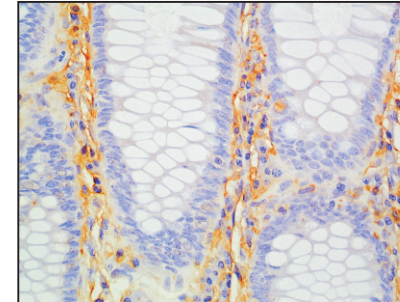
For Research Use Only. Not For Use In Diagnostic Procedures

Product Images



Western blot-Anti- CXCR2 pAb

Lane 1: Human HeLa cell lysate
Lane 2: Human HEK-293 cell lysate
Lane 3: Human HCT116 cell lysate
All lanes: Anti- CXCR2 at 1:1000 dilution
 Lysates/proteins at 20-50 µg per lane.
 Predicted band size: 40 kDa
 Observed band size: 40 kDa



Immunohistochemistry-Anti-CXCR2 pAb

Immunohistochemical analysis of paraffin-embedded human colon cancer using anti-CXCR2 Rabbit Antibody at 1:100 dilution.
 Perform heat mediated antigen retrieval with Tris-EDTA buffer pH 9.0