

Anti-Caspase-6 Rabbit pAb



WL0008

For Research Use Only. Not For Use In Diagnostic Procedures

Product Information

Product name	Anti-Caspase-6 Rabbit pAb		
Source	Rabbit		
Species reactivity	Human, Mouse, Rat		
Tested applications	WB	1:500-1:1000	
	IHC	1:100-1:200	
Cellular localization	Secreted and Cell membrane		
Pack size	50/100/200/500/1000µl		
Storage	Store at -20°C. Avoid freeze/thaw cycles.		
Storage buffer	Supplied in 20 mM phosphate (pH 7.5), 150 mM NaCl, 100 µg/ml BSA, 50% glycerol and less than 0.02% sodium azide		

General Information

Background

Caspase-6 is a member of the cysteine-aspartic acid protease (caspase) family. Sequential activation of caspases plays a central role in the execution-phase of cell apoptosis. Caspases exist as inactive proenzymes which undergo proteolytic processing at conserved aspartic residues to produce two subunits, large and small, that dimerize to form the active enzyme. This protein is processed by caspases 7, 8 and 10, and is thought to function as a downstream enzyme in the caspase activation cascade.

Immunogen

Polyclonal antibody is produced by immunizing animals with a synthetic peptide of Caspase-6.

Purification

Polyclonal antibody was purified by immunogen affinity chromatography.

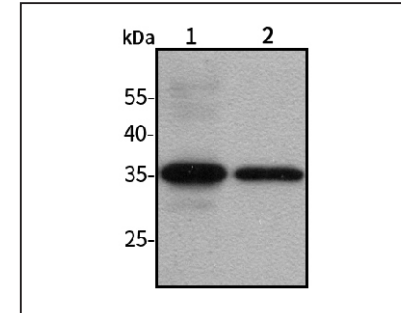
Anti-Caspase-6 Rabbit pAb



WL0008

For Research Use Only. Not For Use In Diagnostic Procedures

Product Images



Western blot-Anti-Caspase-6 pAb

Lane 1: Human SGC-7901 cell lysate

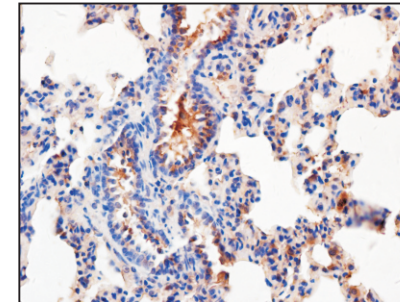
Lane 2: Human Caco2 cell lysate

All lanes: Anti-Caspase-6 at 1:1000 dilution

Lysates/proteins at 20-50 µg per lane.

Predicted band size: 33 kDa

Observed band size: 33 kDa



Immunohistochemistry-Anti-Caspase-6 pAb

Immunohistochemical analysis of paraffin-embedded rat lung using anti-Caspase-6 Rabbit Antibody at 1:200 dilution.

Perform heat mediated antigen retrieval with Tris-EDTA buffer pH 9.0