

## Anti-Raf1 Rabbit pAb



WL00553

For Research Use Only. Not For Use In Diagnostic Procedures

## Product Information

<b>Product name</b>	Anti-Raf1 Rabbit pAb	
<b>Source</b>	Rabbit	
<b>Species reactivity</b>	Human, Mouse, Rat	
<b>Tested applications</b>	Western blot	1:500-1:1000

*\*Suggested working dilutions are given as a guide only. It is recommended that the user titrates the product for use in their own experiment using appropriate negative and positive controls.*

<b>Molecular Wt.</b>	73 kDa
<b>Pack size</b>	50/100/200/500/1000 $\mu$ l
<b>Storage</b>	Store at -20°C. <b>Avoid freeze/thaw cycles.</b>
<b>Storage buffer</b>	Supplied in 20 mM phosphate (pH 7.5), 150 mM NaCl, 100 $\mu$ g/ml BSA, 50% glycerol and less than 0.02% sodium azide

## General Information

<b>Background</b>	Raf1 is a MAP kinase kinase kinase (MAP3K), which functions downstream of the Ras family of membrane associated GTPases to which it binds directly. Activation of Raf1 is the best understood and involves phosphorylation at multiple activating sites including Ser338, Tyr341, Thr491, Ser494, Ser497, and Ser499. The hyperphosphorylation of these six sites is dependent on downstream MEK signaling and renders Raf1 unresponsive to subsequent activation events. Raf1 is broadly expressed in nearly all cell lines tested to date and is the cellular homolog of v-Raf. The unregulated kinase activity of the v-Raf protein has been associated with transformation and mitogenesis while the activity of Raf-1 is normally suppressed by a regulatory N-terminal domain.
<b>Immunogen</b>	Polyclonal antibody is produced by immunizing animals with a synthetic peptide of Raf1.
<b>Purification</b>	Polyclonal antibody was purified by immunogen affinity chromatography.

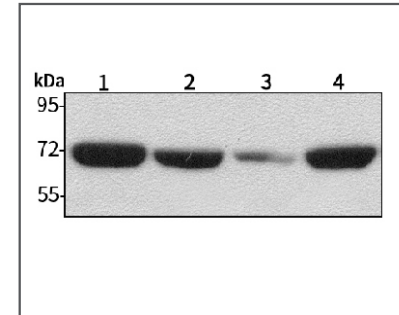
## Anti-Raf1 Rabbit pAb



WL00553

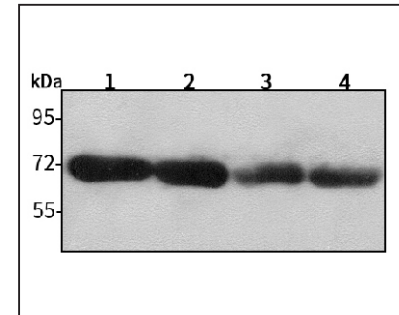
For Research Use Only. Not For Use In Diagnostic Procedures

## Product Images



## Western blot-Anti-Raf1 pAb

Lane 1: Human HepG2 cell lysate 16 $\mu$ g  
 Lane 2: Human Hela cell lysate 16 $\mu$ g  
 Lane 3: Human MGC-803 cell lysate 16 $\mu$ g  
 Lane 4: Human SGC-7901 lysate 16 $\mu$ g  
 Separation gel: 8% polyacrylamide  
 Electrophoresis: 100V, 4°C, 3h  
 Transmembrane: 100V, 4°C, 1h  
 Blocking: 5% w/v nonfat dry milk, 1 $\times$  TBST, at RT with gentle shaking  
 Primary antibody: 1:1000 in blocking buffer, 4°C, overnight  
 Secondary antibody-HRP: 1:7000 in blocking buffer, RT, 45min  
 Visualization: ECL



## Western blot-Anti-Raf1 pAb

Lane 1: Rat lung tissue lysate 12 $\mu$ g  
 Lane 2: Rat skin tissue lysate 12 $\mu$ g  
 Lane 3: Mouse kidney tissue lysate 12 $\mu$ g  
 Lane 4: Mouse testicle tissue lysate 12 $\mu$ g  
 Separation gel: 8% polyacrylamide  
 Electrophoresis: 100V, 4°C, 3h  
 Transmembrane: 100V, 4°C, 1h  
 Blocking: 5% w/v nonfat dry milk, 1 $\times$  TBST, at RT with gentle shaking  
 Primary antibody: 1:1000 in blocking buffer, 4°C, overnight  
 Secondary antibody-HRP: 1:7000 in blocking buffer, RT, 45min  
 Visualization: ECL