

Anti-P-SRC (Tyr530) Rabbit pAb



WL02114

For Research Use Only. Not For Use In Diagnostic Procedures

Product Information

Product name	Anti-P-SRC (Tyr530) Rabbit pAb	
Source	Rabbit	
Species reactivity	Human, Mouse, Rat	
Tested applications	Western blot	1:750-1:1500

**Suggested working dilutions are given as a guide only. It is recommended that the user titrates the product for use in their own experiment using appropriate negative and positive controls.*

Molecular Wt.	60 kDa
Pack size	50/100/200/500/1000µl
Storage	Store at -20°C. Avoid freeze/thaw cycles.
Storage buffer	Supplied in 20 mM phosphate (pH 7.5), 150 mM NaCl, 100 µg/ml BSA, 50% glycerol and less than 0.02% sodium azide

General Information

Background

The Src family of protein tyrosine kinases, which includes Src, Lyn, Fyn, Yes, Lck, Blk, and Hck, are important in the regulation of growth and differentiation of eukaryotic cells. It is a protein tyrosine kinase known to regulate cellular adhesion. Dephosphorylation of Tyr-530 as a result of protein tyrosine phosphatase (PTP) action disrupts the intramolecular interaction between the SH2 domain and Tyr-530, Tyr-419 can then become autophosphorylated, resulting in SRC activation. Phosphorylation of Tyr-530 by c-Src kinase (CSK) allows this interaction to reform, resulting in SRC inactivation. Several cancers including colon and breast cancer have been associated with an increase of Src activity.

Immunogen

Polyclonal antibody is produced by immunizing animals with a synthetic peptide of P-SRC (Tyr530).

Purification

Polyclonal antibody was purified by Protein A affinity chromatography.

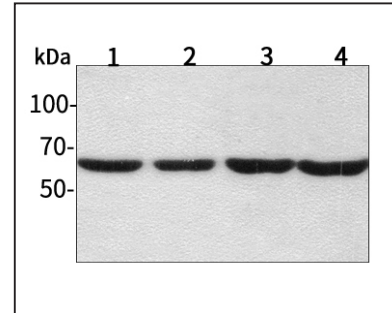
Anti-P-SRC (Tyr530) Rabbit pAb



WL02114

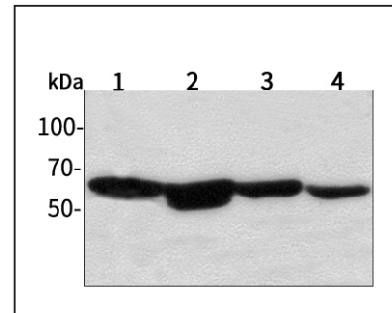
For Research Use Only. Not For Use In Diagnostic Procedures

Product Images



Western blot-Anti-P-SRC (Tyr530) pAb

Lane 1: Human HepG2 cell-LPS treated lysate 30µg
 Lane 2: Human Hela cell-LPS treated lysate 30µg
 Lane 3: Human BGC-823 cell-LPS treated lysate 30µg
 Lane 4: Human MGC-803 cell-LPS treated lysate 30µg
 Separation gel: 8% polyacrylamide
 Electrophoresis: 100V, 4°C, 3h
 Transmembrane: 100V, 4°C, 1h
 Blocking: 5% w/v nonfat dry milk, 1×TBST, at RT with gentle shaking
 Primary antibody: 1:1000 in blocking buffer, 4°C, overnight
 Visualization: ECL, 30s-2min



Western blot-Anti-P-SRC (Tyr530) pAb

Lane 1: Mouse heart tissue-LPS treated lysate 30µg
 Lane 2: Mouse liver tissue-LPS treated lysate 30µg
 Lane 3: Rat brain tissue-LPS treated lysate 30µg
 Lane 4: Rat testicle tissue-LPS treated lysate 30µg
 Separation gel: 8% polyacrylamide
 Electrophoresis: 100V, 4°C, 3h
 Transmembrane: 100V, 4°C, 1h
 Blocking: 5% w/v nonfat dry milk, 1×TBST, at RT with gentle shaking
 Primary antibody: 1:750 in blocking buffer, 4°C, overnight
 Visualization: ECL, 30s-2min