

Anti-PDGFRB Rabbit pAb



WL02363

For Research Use Only. Not For Use In Diagnostic Procedures

Product Information

Product name	Anti-PDGFRB Rabbit pAb	
Source	Rabbit	
Species reactivity	Human	
Tested applications	Western blot	1:500-1:1000

**Suggested working dilutions are given as a guide only. It is recommended that the user titrates the product for use in their own experiment using appropriate negative and positive controls.*

Molecular Wt.	Predicted band size : 124 kDa	
	Observed band size : 175 kDa	

Pack size 50/100/200/500/1000µl

Storage Store at -20°C. **Avoid freeze/thaw cycles.**

Storage buffer Supplied in 20 mM phosphate (pH 7.5), 150 mM NaCl, 100 µg/ml BSA, 50% glycerol and less than 0.02% sodium azide

General Information

Background Platelet derived growth factor (PDGF) family proteins exist as several disulphide-bonded, dimeric isoforms that bind in a specific pattern to two closely related receptor tyrosine kinases, PDGF receptor α (PDGFR α) and PDGF receptor β (PDGFR β). PDGFR α homodimers bind all PDGF isoforms except those containing PDGF D. Evidence suggests that PDGF may function as a neurotrophic factor. The fact that PDGF type A receptors are expressed in oligodendrocyte progenitor cells whereas PDGF type B receptors are expressed on neurons suggests that the different isoforms of PDGF may regulate growth and differentiation of different cell types in the developing central nervous system by paracrine and autocrine routes.

Immunogen Polyclonal antibody is produced by immunizing animals with recombinant protein of PDGFRB.

Purification Polyclonal antibody was purified by Protein A affinity chromatography.

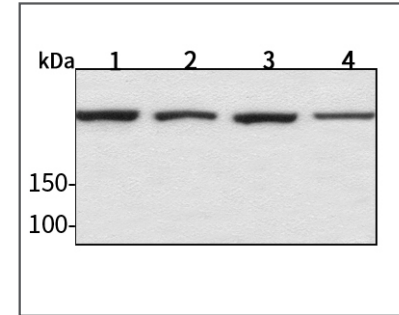
Anti-PDGFRB Rabbit pAb



WL02363

For Research Use Only. Not For Use In Diagnostic Procedures

Product Images



Western blot-Anti-PDGFRB pAb

Lane 1: Human HepG2 cell lysate 30µg

Lane 2: Human Hela cell lysate 30µg

Lane 3: Human BGC-823 cell lysate 30µg

Lane 4: Human MGC-803 cell lysate 30µg

Separation gel: 6% polyacrylamide

Electrophoresis: 100V, 4°C, 3h

Transmembrane: 100V, 4°C, 1h

Blocking: 5% w/v nonfat dry milk, 1×TBST, at RT with gentle shaking

Primary antibody: 1:1000 in blocking buffer, 4°C, overnight

Secondary antibody-HRP: 1:5000-1:10000 in blocking buffer, RT, 45min

Detection: ECL, 30s-2min