



For Research Use Only. Not For Use In Diagnostic Procedures

## Product Information

**Product name** Anti-RNA polymerase II RBP8 Rabbit pAb**Source** Rabbit**Species reactivity** Human, Mouse, Rat

**Tested applications**

Western blot	1:500-1:1500
Immunohistochemistry	1:100-1:200

*\*Suggested working dilutions are given as a guide only. It is recommended that the user titrates the product for use in their own experiment using appropriate negative and positive controls.*

**Molecular Wt.** 17 kDa**Pack size** 50/100/200/500/1000µl**Storage** Store at -20°C. **Avoid freeze/thaw cycles.****Storage buffer** Supplied in 20 mM phosphate (pH 7.5), 150 mM NaCl, 100 µg/ml

BSA, 50% glycerol and less than 0.02% sodium azide

## General Information

## Background

The three eukaryotic RNA polymerases are complex multisubunit enzymes that play a central role in the transcription of nuclear genes. This gene encodes an essential and highly conserved subunit of RNA polymerase II that is shared by the other two eukaryotic DNA-directed RNA polymerases, I and III. Each class of RNA polymerase is assembled from 9 to 15 different polypeptides. The RPB6 and RPB8 subunits are shared by all 3 RNA polymerases. RNA polymerase II transcribes protein-encoding genes into mRNA (messenger RNA) and snRNA (small nuclear RNA) genes into snRNAs that influence the processing of other classes of RNA.

## Immunogen

Polyclonal antibody is produced by immunizing animals with recombinant protein of RNA polymerase II RBP8 .

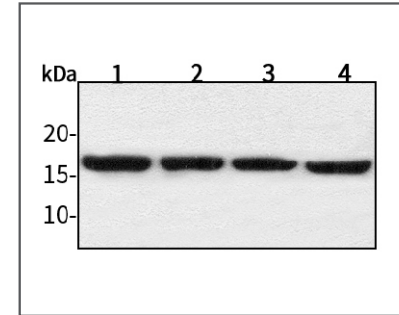
## Purification

Polyclonal antibody was purified by Protein A affinity chromatography.



For Research Use Only. Not For Use In Diagnostic Procedures

## Product Images



## Western blot-Anti-RNA polymerase II RBP8 pAb

Lane 1: Human HepG2 cell lysate 30µg

Lane 2: Human Hela cell lysate 30µg

Lane 3: Human BGC-823 cell lysate 30µg

Lane 4: Human MGC-803 cell lysate 30µg

Separation gel: 15% polyacrylamide

Electrophoresis: 100V, 4°C, 3h

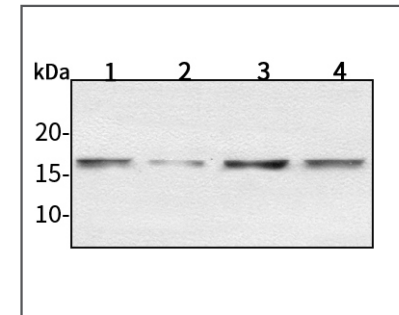
Transmembrane: 100V, 4°C, 1h

Blocking: 5% w/v nonfat dry milk, 1×TBST, at RT with gentle shaking

Primary antibody: 1:1500 in blocking buffer, 4°C, overnight

Secondary antibody (WLA023a) : 1:5000-1:10000, 45min

Detection: ECL, 30s-2min



## Western blot-Anti-RNA polymerase II RBP8 pAb

Lane 1: Mouse heart tissue lysate 30µg

Lane 2: Mouse liver tissue lysate 30µg

Lane 3: Rat brain tissue lysate 30µg

Lane 4: Rat colon tissue lysate 30µg

Separation gel: 15% polyacrylamide

Electrophoresis: 100V, 4°C, 3h

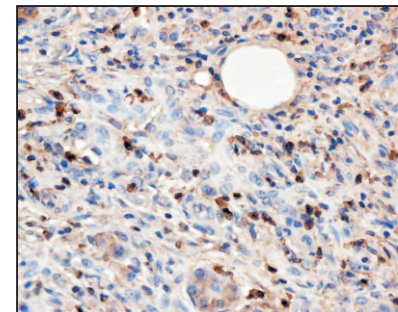
Transmembrane: 100V, 4°C, 1h

Blocking: 5% w/v nonfat dry milk, 1×TBST, at RT with gentle shaking

Primary antibody: 1:500 in blocking buffer, 4°C, overnight

Secondary antibody (WLA023a) : 1:5000-1:10000, 45min

Detection: ECL, 30s-2min



## Immunohistochemistry-Anti-RNA polymerase II RBP8 pAb

Sample: Human pancreatic cancer tissue

Antigen retrieval: pH 9.0 Tris-EDTA buffer

Primary antibody: 1:200, 4°C, overnight

Secondary antibody-Biotin: 1:150, 37°C, 1h

Streptavidin-HRP: 1:200, 37°C, 30min

Color Developing: DAB