

## Anti-CD28 Rabbit pAb



WL0252

For Research Use Only. Not For Use In Diagnostic Procedures

## Product Information

<b>Product name</b>	Anti-CD28 Rabbit pAb		
<b>Source</b>	Rabbit		
<b>Species reactivity</b>	Human		
<b>Tested applications</b>	WB	1:500-1:1000	
<b>Pack size</b>	50/100/200/500/1000µl		
<b>Storage</b>	Store at -20°C. <b>Avoid freeze/thaw cycles.</b>		
<b>Storage buffer</b>	Supplied in 20 mM phosphate (pH 7.5), 150 mM NaCl, 100 µg/ml BSA, 50% glycerol and less than 0.02% sodium azide		

## General Information

## Background

T-cell-specific surface glycoprotein CD28, also known as TP44 and CD28, is a single-pass type I membrane protein which contains one Ig-like V-type (immunoglobulin-like) domain. CD28 / TP44 can binds the B7-1 and B7-2 ligand, and together perform important functions in the T and B cell response pathways. CD28 / TP44 is thus involved in T-cell activation, the induction of cell proliferation and cytokine production and promotion of T-cell survival.

## Immunogen

Polyclonal antibody is produced by immunizing animals with a synthetic peptide of CD28.

## Purification

Polyclonal antibody was purified by immunogen affinity chromatography.

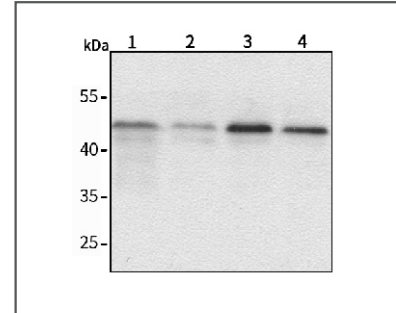
## Anti-CD28 Rabbit pAb



WL0252

For Research Use Only. Not For Use In Diagnostic Procedures

## Product Images



## Western blot-Anti-CD28 pAb

Lane 1: Human SW480 cell lysate

Lane 2: Human BGC-823 cell lysate

Lane 3: Human MGC-803 cell lysate

Lane 4: Human SGC-7901 cell lysate

All lanes: Anti-CD28 at 1:500 dilution

Lysates/proteins at 20-50 µg per lane.

Predicted band size: CD28 monomer 44 kDa

Observed band size: CD28 monomer 44 kDa