

Anti-AKT2 Rabbit pAb



WL02583

For Research Use Only. Not For Use In Diagnostic Procedures

Product Information

Product name	Anti-AKT2 Rabbit pAb	
Source	Rabbit	
Species reactivity	Human	
Tested applications	WB	1:1000-1:1500
	IHC	1:100-1:400
Cellular localization	Secreted and Cell membrane	
Pack size	50/100/200/500/1000 μ l	
Storage	Store at -20°C. Avoid freeze/thaw cycles.	
Storage buffer	Supplied in 20 mM phosphate (pH 7.5), 150 mM NaCl, 100 μ g/ml BSA, 50% glycerol and less than 0.02% sodium azide	

General Information

Background	Akt, also referred to as PKB or Rac, plays a critical role in controlling survival and apoptosis. This protein kinase is activated by insulin and various growth and survival factors to function in a wortmannin-sensitive pathway involving PI3 kinase. In mammals, three highly homologous members define the Akt family: Akt1 (also designated PKB or RacPK), Akt2 (also designated PKB β or RacPK- β) and Akt 3 (also designated PKB γ or thymoma viral proto-oncogene 3). Akt2 is expressed predominantly in insulin target tissues such as liver, skeletal muscle, and fat.
Immunogen	Polyclonal antibody is produced by immunizing animals with a synthetic peptide of AKT2.
Purification	Polyclonal antibody was purified by Protein A affinity chromatography.

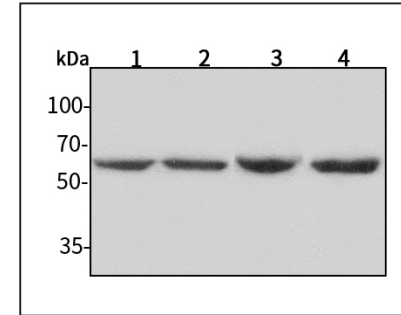
Anti-AKT2 Rabbit pAb



WL02583

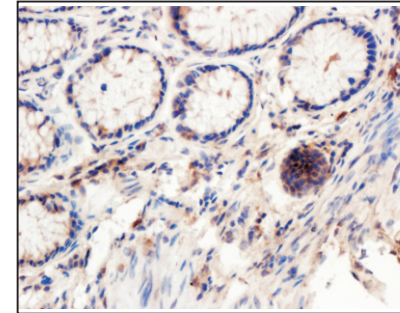
For Research Use Only. Not For Use In Diagnostic Procedures

Product Images



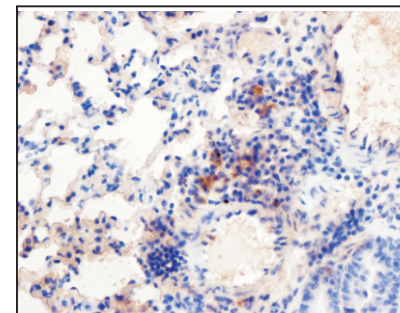
Western blot-Anti-AKT2 pAb

Lane 1: Human HepG2 cell lysate
 Lane 2: Human Hela cell lysate
 Lane 3: Human BGC-823 cell lysate
 Lane 4: Human MGC-803 cell lysate
 All lanes: Anti-AKT2 at 1:1500 dilution
 Lysates/proteins at 20-50 μ g per lane.
 Predicted band size: 56 kDa
 Observed band size: 56 kDa



Immunohistochemistry-Anti-AKT2 pAb

Immunohistochemical analysis of paraffin-embedded human colon cancer using anti-AKT2 Rabbit Antibody at 1:150 dilution.
 Perform heat mediated antigen retrieval with Tris-EDTA buffer pH 9.0



Immunohistochemistry-Anti-AKT2 pAb

Immunohistochemical analysis of paraffin-embedded mouse lung using anti-AKT2 Rabbit Antibody at 1:150 dilution.
 Perform heat mediated antigen retrieval with Tris-EDTA buffer pH 9.0