

Anti-CD20 Rabbit pAb



WL02883

For Research Use Only. Not For Use In Diagnostic Procedures

Product Information

Product name	Anti-CD20 Rabbit pAb		
Source	Rabbit		
Species reactivity	Human		
Tested applications	WB	1:500-1:1000	
Pack size	50/100/200/500/1000µl		
Storage	Store at -20°C. Avoid freeze/thaw cycles.		
Storage buffer	Supplied in 20 mM phosphate (pH 7.5), 150 mM NaCl, 100 µg/ml BSA, 50% glycerol and less than 0.02% sodium azide		

General Information

Background	CD20 is a leukocyte surface antigen consisting of four transmembrane regions and cytoplasmic N- and C-termini. It is suspected that it acts as a calcium channel in the cell membrane. It has been shown that CD20 plays a role in the microenvironmental interactions of B cells. CD20 is expressed on all stages of B cell development except the first and last; it is present from late pro-B cells through memory cells, but not on either early pro-B cells or plasma blasts and plasma cells. The expression of CD20 is regulated by the chemokine signalling through the CXCR4/SDF1 axis, and this can be impaired by drugs interfering with microenvironmental interactions.
Immunogen	Polyclonal antibody is produced by immunizing animals with a synthetic peptide of CD20.
Purification	Polyclonal antibody was purified by Protein A affinity chromatography.

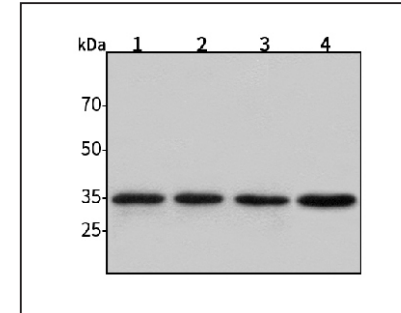
Anti-CD20 Rabbit pAb



WL02883

For Research Use Only. Not For Use In Diagnostic Procedures

Product Images



Western blot-Anti-CD20 pAb

Lane 1: Human HepG2 cell lysate
Lane 2: Human Hela cell lysate
Lane 3: Human BGC-823 cell lysate
Lane 4: Human MGC-803 cell lysate
All lanes: Anti-CD20 at 1:1000 dilution
 Lysates/proteins at 20-50 µg per lane.
 Predicted band size: 33 kDa
 Observed band size: 35 kDa