

Anti-CA2 Rabbit pAb



WL03190

For Research Use Only. Not For Use In Diagnostic Procedures

Product Information

Product name	Anti-CA2 Rabbit pAb		
Source	Rabbit		
Species reactivity	Human, Mouse, Rat		
Tested applications	WB	1:1500-1:2000	
Cellular localization	Secreted and Cell membrane		
Pack size	50/100/200/500/1000µl		
Storage	Store at -20°C. Avoid freeze/thaw cycles.		
Storage buffer	Supplied in 20 mM phosphate (pH 7.5), 150 mM NaCl, 100 µg/ml BSA, 50% glycerol and less than 0.02% sodium azide		

General Information

Background

Ca2 is one of several (at least 7) isozymes of carbonic anhydrase. Carbonic anhydrase catalyzes reversible hydration of carbon dioxide. Defects in this enzyme are associated with osteopetrosis and renal tubular acidosis. All CA can be divided into 3 distinct classes (α , β , and γ) that evolved independently and have no significant homology in sequence and overall folding. All functional CA catalyze the reversible hydration of CO₂ into HCO₃⁻ and H⁺ and contain a zinc atom in the active sites essential for catalysis. CA2 is a cytosolic member of the α class. It is the most widely distributed isoform among the mammalian CAs. Defects in CA2 are associated with osteopetrosis and renal tubular acidosis. Elevated expression of CA2 is observed in patients with Alzheimer's disease and the developing brains of Down syndrome patients.

Immunogen

Polyclonal antibody is produced by immunizing animals with a synthetic peptide of CA2.

Purification

Polyclonal antibody was purified by Protein A affinity chromatography.

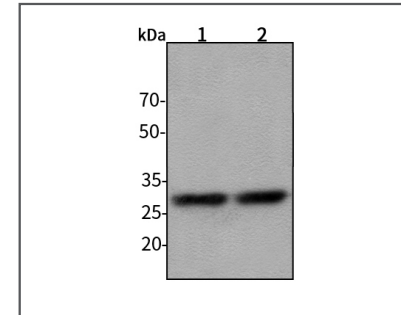
Anti-CA2 Rabbit pAb



WL03190

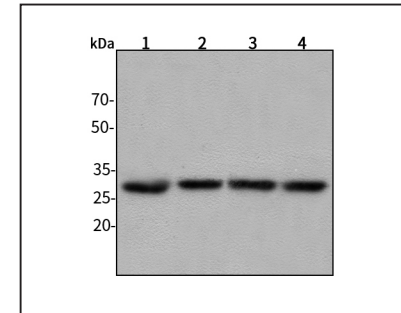
For Research Use Only. Not For Use In Diagnostic Procedures

Product Images



Western blot-Anti-CA2 pAb

Lane 1: Human MCF-7 cell lysate
 Lane 2: Human HEK-293 cell lysate
 All lanes: Anti-CA2 at 1:1500 dilution
 Lysates/proteins at 20-50 µg per lane.
 Predicted band size: 28 kDa
 Observed band size: 28 kDa



Western blot-Anti-CA2 pAb

Lane 1: Mouse kidney tissue lysate
 Lane 2: Mouse heart tissue lysate
 Lane 3: Rat lung tissue lysate
 Lane 4: Rat stomach tissue lysate
 All lanes: Anti-CA2 at 1:1500 dilution
 Lysates/proteins at 20-50 µg per lane.
 Predicted band size: 28 kDa
 Observed band size: 28 kDa