

Anti-T-bet Rabbit pAb



WL03236

For Research Use Only. Not For Use In Diagnostic Procedures

Product Information

Product name	Anti-T-bet Rabbit pAb	
Source	Rabbit	
Species reactivity	Human, Mouse, Rat	
Tested applications	Western blot	1:500-1:1000
	<i>*Suggested working dilutions are given as a guide only. It is recommended that the user titrates the product for use in their own experiment using appropriate negative and positive controls.</i>	
Molecular Wt.	65 kDa	
Pack size	50/100/200/500/1000µl	
Storage	Store at -20°C. Avoid freeze/thaw cycles.	
Storage buffer	Supplied in 20 mM phosphate (pH 7.5), 150 mM NaCl, 100 µg/ml BSA, 50% glycerol and less than 0.02% sodium azide	

General Information

Background

The T-box gene family consists of transcription factors characterized by a related DNA-binding domain (T-box) of approximately 200 amino acids. The T-box genes exhibit diverse temporal and spatial patterns in the developing embryo. TBX21 is a member of a phylogenetically conserved family of proteins that share a common DNA-binding domain, the T-box. TBX21 is the human ortholog of mouse Tbx21/Tbet protein. Studies in mouse show that Tbx21 protein is a Th1 cell-specific transcription factor that controls the expression of the hallmark Th1 cytokine, interferon-gamma (IFNG). Expression of the human ortholog also correlates with IFNG expression in Th1 and natural killer cells, suggesting a role for this gene in initiating Th1 lineage development from naive Th precursor cells.

Immunogen

Polyclonal antibody is produced by immunizing animals with a synthetic peptide of T-bet.

Purification

Polyclonal antibody was purified by immunogen affinity chromatography.

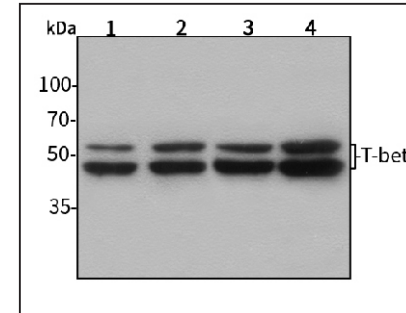
Anti-T-bet Rabbit pAb



WL03236

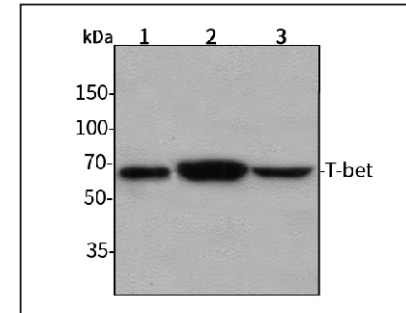
For Research Use Only. Not For Use In Diagnostic Procedures

Product Images



Western blot-Anti-T-bet pAb

Lane 1: Human HeLa cell lysate 30µg
 Lane 2: Human BGC-823 cell lysate 30µg
 Lane 3: Human SGC-7901 cell lysate 30µg
 Lane 4: Human MCF-7 cell lysate 30µg
Separation gel: 8% polyacrylamide
Electrophoresis: 100V, 4°C, 3h
Transmembrane: 100V, 4°C, 1h
Blocking: 5% w/v nonfat dry milk, 1× TBST, at RT with gentle shaking
Primary antibody: 1:1000 in blocking buffer, 4°C, overnight
Secondary antibody (WLA023a) : 1:5000-1:10000, 45min
Detection: ECL, 30s-2min



Western blot-Anti-T-bet pAb

Lane 1: Mouse liver tissue lysate 30µg
 Lane 2: Mouse brain tissue lysate 30µg
 Lane 3: Rat lung tissue lysate 30µg
Separation gel: 8% polyacrylamide
Electrophoresis: 100V, 4°C, 3h
Transmembrane: 100V, 4°C, 1h
Blocking: 5% w/v nonfat dry milk, 1× TBST, at RT with gentle shaking
Primary antibody: 1:1000 in blocking buffer, 4°C, overnight
Secondary antibody (WLA023a) : 1:5000-1:10000, 45min
Detection: ECL, 30s-2min