

Anti-BrdU Rabbit pAb



WL03820

For Research Use Only. Not For Use In Diagnostic Procedures

Product Information

Product name	Anti-BrdU Rabbit pAb
Source	Rabbit
Species reactivity	Human
Tested applications	Immunofluorescence 1:100 <i>Suggested working dilutions are given as a guide only. It is recommended that the user titrates the product for use in their own experiment using appropriate negative and positive controls.</i>
Pack size	50/100/200/500/1000µl
Storage	Store at -20°C. Avoid freeze/thaw cycles.
Storage buffer	Supplied in 20 mM phosphate (pH 7.5), 150 mM NaCl, 100 µg/ml BSA, 50% glycerol and less than 0.02% sodium azide

General Information

Background	The immunocytochemical detection of bromodeoxyuridine (BrdU) incorporated into DNA is a powerful tool to study the cytokinetics of normal and neoplastic cells. In vitro or in vivo labeling of tumor cells with the thymidine analogue BrdU and the subsequent detection of incorporated BrdU with specific anti-BrdU monoclonal antibodies is an accurate and comprehensive method to quantitate the degree of DNA-synthesis. Also dynamic proliferative information such as the S-phase transit rate and the potential doubling time can be obtained, by means of bivariate BrdU/DNA flow cytometric analysis.
Immunogen	Polyclonal antibody is produced by immunizing animals with a synthetic peptide of BrdU.
Purification	Polyclonal antibody was purified by Protent A affinity chromatography.

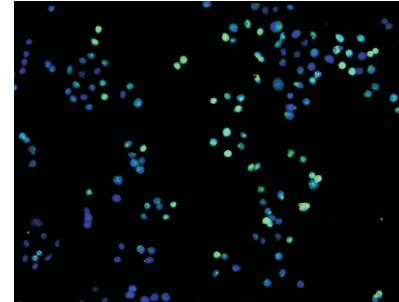
Anti-BrdU Rabbit pAb



WL03820

For Research Use Only. Not For Use In Diagnostic Procedures

Product Images



Immunofluorescence-Anti-BrdU pAb

Sample: HeLa cells treated with 100µM BrdU for 4hrs
 Primary antibody: 1:100