

Anti-Cdc25L Rabbit pAb



WL04192

For Research Use Only. Not For Use In Diagnostic Procedures

Product Information

Product name	Anti-Cdc25L Rabbit pAb	
Source	Rabbit	
Species reactivity	Human, Mouse, Rat	
Tested applications	WB	1:500-1:1000
Pack size	50/100/200/500/1000 μ l	
Storage	Store at -20°C. Avoid freeze/thaw cycles.	
Storage buffer	Supplied in 20 mM phosphate (pH 7.5), 150 mM NaCl, 100 μ g/ml BSA, 50% glycerol and less than 0.02% sodium azide	

General Information

Background	The protein encoded by this gene is a guanine nucleotide exchange factor (GEF) similar to the <i>Saccharomyces cerevisiae</i> CDC25 gene product. Functional analysis has demonstrated that this protein stimulates the dissociation of GDP from RAS protein. A critical step in signal transduction responses to stimulation of cell surface receptors by their ligands involves the accumulation of Ras proteins in their active GTP-bound state. To reach their active GTP-bound state, Ras proteins must first release bound GDP, a rate-limiting step mediated by a guanine nucleotide releasing factor (GRF). The mammalian Ras p21 GRF protein has been designated Ras-GRF p140.
Immunogen	Polyclonal antibody is produced by immunizing animals with a synthetic peptide of Cdc25L.
Purification	Polyclonal antibody was purified immunogen affinity chromatography.

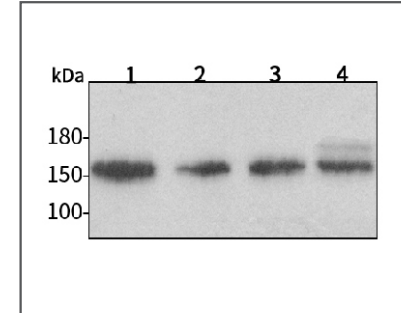
Anti-Cdc25L Rabbit pAb



WL04192

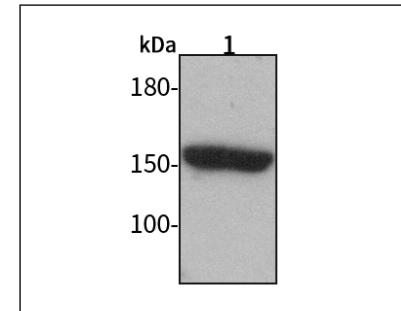
For Research Use Only. Not For Use In Diagnostic Procedures

Product Images



Western blot-Anti-Cdc25L pAb

Lane 1: Human HeLa cell lysate
 Lane 2: Human MCF-7 cell lysate
 Lane 3: Human HEK-293 cell lysate
 Lane 4: Human HUVEC cell lysate
 All lanes: Anti-Cdc25L at 1:500 dilution
 Lysates/proteins at 20-50 μ g per lane.
 Predicted band size: 150 kDa
 Observed band size: 150 kDa



Western blot-Anti-Cdc25L pAb

Lane 1: Mouse heart tissue lysate
 All lanes: Anti-Cdc25L at 1:500 dilution
 Lysates/proteins at 20-50 μ g per lane.
 Predicted band size: 150 kDa
 Observed band size: 150 kDa