

Anti- γ -Catenin/JUP Rabbit pAb

WL04237

For Research Use Only. Not For Use In Diagnostic Procedures

Product Information

Product name	Anti- γ -Catenin/JUP Rabbit pAb	
Source	Rabbit	
Species reactivity	Human, Mouse, Rat	
Tested applications	Western blot	1:500-1:1000

**Suggested working dilutions are given as a guide only. It is recommended that the user titrates the product for use in their own experiment using appropriate negative and positive controls.*

Molecular Wt.	82 kDa
Pack size	50/100/200/500/1000 μ l
Storage	Store at -20°C. Avoid freeze/thaw cycles.
Storage buffer	Supplied in 20 mM phosphate (pH 7.5), 150 mM NaCl, 100 μ g/ml BSA, 50% glycerol and less than 0.02% sodium azide

General Information

Background

This gene encodes a major cytoplasmic protein which is the only known constituent common to submembranous plaques of both desmosomes and intermediate junctions. Also known as plakoglobin, γ -catenin is a member of the Armadillo family of signaling molecules, which includes β -catenin and the Drosophila protein armadillo. This family of proteins is involved in Wnt signaling, which is important in embryonic development and in tumorigenesis. This protein forms distinct complexes with cadherins and desmosomal cadherins and is a member of the catenin family since it contains a distinct repeating amino acid motif called the armadillo repeat. Mutation in this gene has been associated with Naxos disease.

Immunogen

Polyclonal antibody is produced by immunizing animals with a synthetic peptide of γ -Catenin/JUP.

Purification

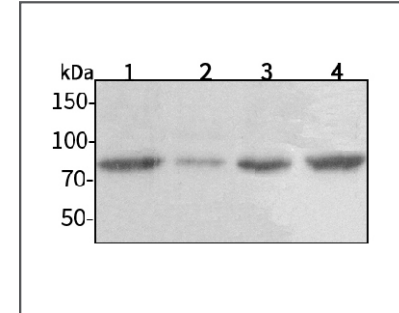
Polyclonal antibody was purified by Protein A affinity chromatography.

Anti- γ -Catenin/JUP Rabbit pAb

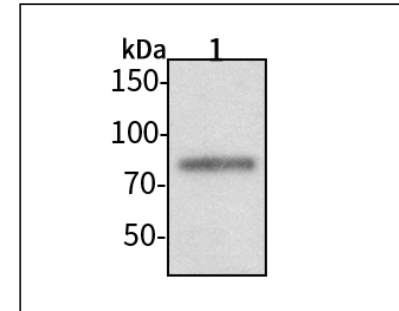
WL04237

For Research Use Only. Not For Use In Diagnostic Procedures

Product Images

Western blot-Anti- γ -Catenin/JUP pAb

Lane 1: Human HeLa cell lysate 30 μ g
 Lane 2: Human MCF-7 cell lysate 30 μ g
 Lane 3: Human A549 cell lysate 30 μ g
 Lane 4: Human HUVEC cell lysate 30 μ g
Separation gel: 8% polyacrylamide
Electrophoresis: 100V, 4°C, 3h
Transmembrane: 100V, 4°C, 1.5h
Blocking: 5% w/v nonfat dry milk, 1 \times TBST, at RT with gentle shaking
Primary antibody: 1:500 in blocking buffer, 4°C, overnight
Secondary antibody-HRP: 1:7000 in blocking buffer, RT, 45min
Visualization: ECL

Western blot-Anti- γ -Catenin/JUP pAb

Lane 1: Mouse kidney tissue lysate 30 μ g
Separation gel: 8% polyacrylamide
Electrophoresis: 100V, 4°C, 3h
Transmembrane: 100V, 4°C, 1.5h
Blocking: 5% w/v nonfat dry milk, 1 \times TBST, at RT with gentle shaking
Primary antibody: 1:500 in blocking buffer, 4°C, overnight
Secondary antibody-HRP: 1:7000 in blocking buffer, RT, 45min
Visualization: ECL