



For Research Use Only. Not For Use In Diagnostic Procedures

Product Information

| | |
|----------------------------|---|
| Product name | Anti-Endostatin/COL18A1 Rabbit pAb |
| Source | Rabbit |
| Species reactivity | Human |
| Tested applications | WB 1:500-1:1000 |
| Pack size | 50/100/200/500/1000µl |
| Storage | Store at -20°C. Avoid freeze/thaw cycles. |
| Storage buffer | Supplied in 20 mM phosphate (pH 7.5), 150 mM NaCl, 100 µg/ml BSA, 50% glycerol and less than 0.02% sodium azide |

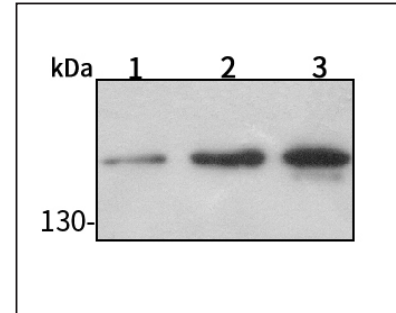
General Information

| | |
|---------------------|--|
| Background | Endostatin/COL18A1 is the alpha chain of type XVIII collagen. Members of the MULTIPLEXIN subgroup contain polypeptides with multiple triple-helical domains separated and flanked by nontriple-helical regions. Proteolytic processing at several endogenous cleavage sites in the C-terminal domain results in production of endostatin, a potent antiangiogenic protein that is able to inhibit angiogenesis and tumor growth. |
| Immunogen | Polyclonal antibody is produced by immunizing animals with a synthetic peptide of Endostatin/COL18A1. |
| Purification | Polyclonal antibody was purified by Protein A affinity chromatography. |



For Research Use Only. Not For Use In Diagnostic Procedures

Product Images



Western blot-Anti-Endostatin/COL18A1 pAb

Lane 1: Human Hela cell lysate

Lane 2: Human MCF-7 cell lysate

Lane 3: Human HEK-293 cell lysate

All lanes: Anti-Endostatin/COL18A1 at 1:500 dilution

Lysates/proteins at 20-50 µg per lane.

Predicted band size: 178 kDa

Observed band size: 178 kDa