

## Anti-ACE2 Rabbit pAb



WL04708

For Research Use Only. Not For Use In Diagnostic Procedures

## Product Information

<b>Product name</b>	Anti-ACE2 Rabbit pAb
<b>Source</b>	Rabbit
<b>Species reactivity</b>	Human, Mouse, Rat
<b>Tested applications</b>	WB 1:500-1:1000
<b>Pack size</b>	50/100/200/500/1000µl
<b>Storage</b>	Store at -20°C. <b>Avoid freeze/thaw cycles.</b>
<b>Storage buffer</b>	Supplied in 20 mM phosphate (pH 7.5), 150 mM NaCl, 100 µg/ml BSA, 50% glycerol and less than 0.02% sodium azide

## General Information

**Background** ACE2 is a zinc metalloprotease of the ACE family and a critical regulator of the reninangiotensin system. This secreted protein catalyzes the cleavage of angiotensin I into angiotensin 1-9, and angiotensin II into the vasodilator angiotensin 1-7. ACE2 is known to be expressed in various human organs, and its organ- and cell-specific expression suggests that it may play a role in the regulation of cardiovascular and renal function, as well as fertility.

**Immunogen** Polyclonal antibody is produced by immunizing animals with a synthetic peptide of ACE2.

**Purification** Polyclonal antibody was purified by immunogen affinity chromatography.

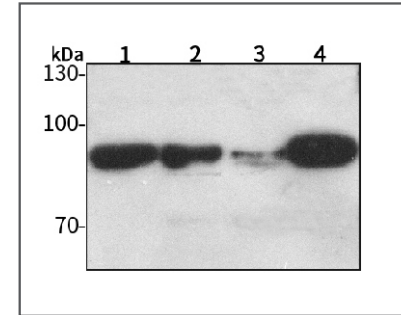
## Anti-ACE2 Rabbit pAb



WL04708

For Research Use Only. Not For Use In Diagnostic Procedures

## Product Images



## Western blot-Anti-ACE2 pAb

Lane 1: Human HeLa cell lysate  
 Lane 2: Human MCF-7 cell lysate  
 Lane 3: Human BGC-823 cell lysate  
 Lane 4: Human MGC-803 cell lysate  
 All lanes: Anti-ACE2 at 1:500 dilution  
 Lysates/proteins at 20-50 µg per lane.  
 Predicted band size: 92 kDa  
 Observed band size: 92 kDa