

Anti-RHEB Rabbit pAb



WL04738

For Research Use Only. Not For Use In Diagnostic Procedures

Product Information

Product name	Anti-RHEB Rabbit pAb		
Source	Rabbit		
Species reactivity	Human		
Tested applications	Western blot	1:500-1:1000	
	<i>*Suggested working dilutions are given as a guide only. It is recommended that the user titrates the product for use in their own experiment using appropriate negative and positive controls.</i>		
Molecular Wt.	20 kDa		
Pack size	50/100/200/500/1000µl		
Storage	Store at -20°C. Avoid freeze/thaw cycles.		
Storage buffer	Supplied in 20 mM phosphate (pH 7.5), 150 mM NaCl, 100 µg/ml BSA, 50% glycerol and less than 0.02% sodium azide		

General Information

Background	Rheb is a member of the Ras superfamily small GTPases that plays important roles in the regulation of protein synthesis and growth in response to nutrient and growth factors. This protein is vital in regulation of growth and cell cycle progression due to its role in the insulin/TOR/S6K signaling pathway. The protein has GTPase activity and shuttles between a GDP-bound form and a GTP-bound form, and farnesylation of the protein is required for this activity.
Immunogen	Polyclonal antibody is produced by immunizing animals with a synthetic peptide of RHEB.
Purification	Polyclonal antibody was purified by Protein A affinity chromatography.

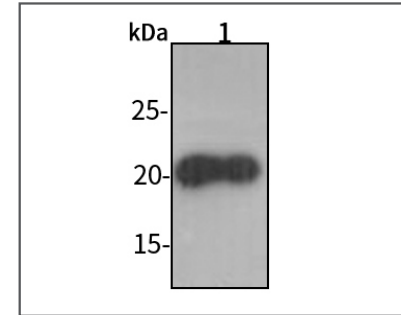
Anti-RHEB Rabbit pAb



WL04738

For Research Use Only. Not For Use In Diagnostic Procedures

Product Images



Western blot-Anti-RHEB pAb

Lane 1: Human HeLa cell lysate 30µg
 Separation gel: 15% polyacrylamide
 Electrophoresis: 100V, 4°C, 3h
 Transmembrane: 100V, 4°C, 1h
 Blocking: 5% w/v nonfat dry milk, 1×TBST, at RT with gentle shaking
 Primary antibody: 1:1000 in blocking buffer, 4°C, overnight
 Secondary antibody (WLA023a) : 1:5000-1:10000, 45min
 Detection: ECL, 30s-2min