

Anti-CK1 epsilon Rabbit pAb



WL04799

For Research Use Only. Not For Use In Diagnostic Procedures

Product Information

Product name	Anti-CK1 epsilon Rabbit pAb	
Source	Rabbit	
Species reactivity	Mouse, Rat	
Tested applications	WB	1:500-1:1000
Pack size	50/100/200/500/1000µl	
Storage	Store at -20°C. Avoid freeze/thaw cycles.	
Storage buffer	Supplied in 20 mM phosphate (pH 7.5), 150 mM NaCl, 100 µg/ml BSA, 50% glycerol and less than 0.02% sodium azide	

General Information

Background Ck1 epsilon is a serine/threonine protein kinase and a member of the casein kinase I protein family, whose members have been implicated in the control of cytoplasmic and nuclear processes, including DNA replication and repair. The encoded protein is found in the cytoplasm as a monomer and can phosphorylate a variety of proteins, including itself. Two transcript variants encoding the same protein have been found for this gene.

Immunogen Polyclonal antibody is produced by immunizing animals with a synthetic peptide of CK1 epsilon.

Purification Polyclonal antibody was purified by immunogen affinity chromatography.

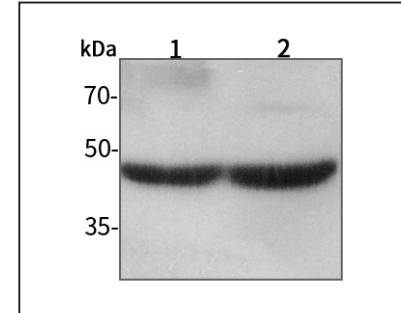
Anti-CK1 epsilon Rabbit pAb



WL04799

For Research Use Only. Not For Use In Diagnostic Procedures

Product Images



Western blot-Anti-CK1 epsilon pAb

Lane 1: Mouse colon tissue lysate

Lane 2: Rat stomach tissue lysate

All lanes: Anti-CK1 epsilon at 1:500 dilution

Lysates/proteins at 20-50 µg per lane.

Predicted band size: 47 kDa

Observed band size: 47 kDa