

Anti-Albumin Rabbit pAb



WL04835

For Research Use Only. Not For Use In Diagnostic Procedures

Product Information

Product name	Anti-Albumin Rabbit pAb
Source	Rabbit
Species reactivity	Human, Mouse, Rat
Tested applications	WB 1:500-1:1000
Pack size	50/100/200/500/1000µl
Storage	Store at -20°C. Avoid freeze/thaw cycles.
Storage buffer	Supplied in 20 mM phosphate (pH 7.5), 150 mM NaCl, 100 µg/ml BSA, 50% glycerol and less than 0.02% sodium azide

General Information

Background	Albumin is the most abundant protein in blood plasma. Alterations of level of serum albumin are linked to variety of diseases. Albumin is expressed exclusively by well-differentiated hepatocytes, thus anti-albumin has been used to mark hepatocytes.
-------------------	--

Immunogen	Polyclonal antibody is produced by immunizing animals with a synthetic peptide of Albumin.
------------------	--

Purification	Polyclonal antibody was purified by Protein A affinity chromatography.
---------------------	--

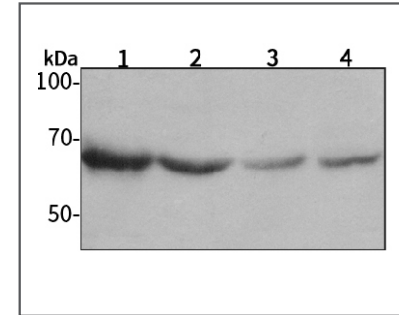
Anti-Albumin Rabbit pAb



WL04835

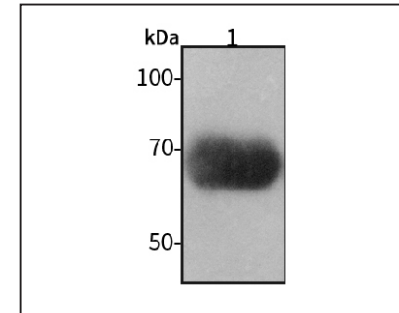
For Research Use Only. Not For Use In Diagnostic Procedures

Product Images



Western blot-Anti-Albumin pAb

Lane 1: Human HeLa cell lysate
 Lane 2: Human MCF-7 cell lysate
 Lane 3: Human HEK-293 cell lysate
 Lane 4: Human HUVEC cell lysate
 All lanes: Anti-Albumin at 1:1000 dilution
 Lysates/proteins at 20-50 µg per lane.
 Predicted band size: 69 kDa
 Observed band size: 69 kDa



Western blot-Anti-Albumin pAb

Lane 1: Mouse liver tissue lysate
 All lanes: Anti-Albumin at 1:1000 dilution
 Lysates/proteins at 20-50 µg per lane.
 Predicted band size: 69 kDa
 Observed band size: 69 kDa