

Anti-Prealbumin Rabbit pAb



WL05030

For Research Use Only. Not For Use In Diagnostic Procedures

Product Information

Product name	Anti-Prealbumin Rabbit pAb	
Source	Rabbit	
Species reactivity	Human, Mouse, Rat	
Tested applications	Western blot	1:500-1:1000
	<i>*Suggested working dilutions are given as a guide only. It is recommended that the user titrates the product for use in their own experiment using appropriate negative and positive controls.</i>	
Molecular Wt.	15 kDa	
Pack size	50/100/200/500/1000µl	
Storage	Store at -20°C. Avoid freeze/thaw cycles.	
Storage buffer	Supplied in 20 mM phosphate (pH 7.5), 150 mM NaCl, 100 µg/ml BSA, 50% glycerol and less than 0.02% sodium azide	

General Information

Background

Prealbumin, also designated transthyretin, is a major thyroid-hormone binding protein involved in transporting thyroxine from the bloodstream to the brain. Prealbumin is located in the cytoplasm and in the vesicles of developing rat brain cells, and is thought to be transported there from the cerebrospinal fluid via endocytosis. Sequence variants of this protein have been identified in amyloid fibrils from patients with familial amyloidotic polyneuropathy (FAP), the most common form of hereditary systemic amyloidosis. Although the biologically active form of Prealbumin is a tetramer, the amyloidogenic intermediate is thought to be a monomeric species. Prealbumin also binds to the retinol carrier protein RBP (retinol-binding protein).

Immunogen

Polyclonal antibody is produced by immunizing animals with a synthetic peptide of Prealbumin.

Purification

Polyclonal antibody was purified by immunogen affinity chromatography.

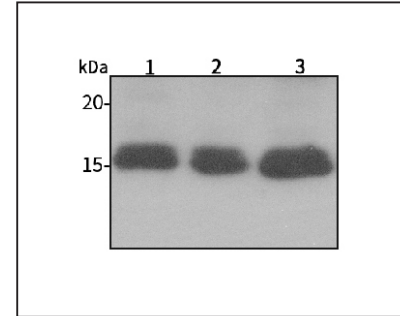
Anti-Prealbumin Rabbit pAb



WL05030

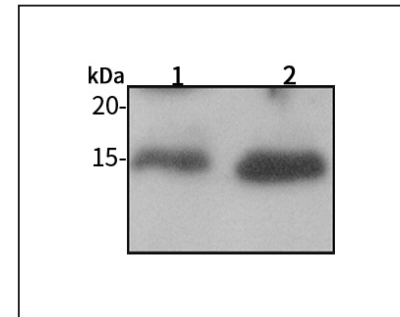
For Research Use Only. Not For Use In Diagnostic Procedures

Product Images



Western blot-Anti-Prealbumin pAb

Lane 1: Human MCF-7 cell lysate 20µg
 Lane 2: Human HEK-293 cell lysate 20µg
 Lane 3: Human HUVEC lysate 20µg
 Separation gel: 15% polyacrylamide
 Electrophoresis: 100V, 4°C, 3h
 Transmembrane: 100V, 4°C, 1h
 Blocking: 5% w/v nonfat dry milk, 1×TBST, at RT with gentle shaking
 Primary antibody: 1:1000 in blocking buffer, 4°C, overnight
 Secondary antibody-HRP: 1:7000 in blocking buffer, RT, 45min
 Visualization: ECL



Western blot-Anti-Prealbumin pAb

Lane 1: Mouse kidney tissue lysate 20µg
 Lane 2: Rat liver tissue lysate 20µg
 Separation gel: 15% polyacrylamide
 Electrophoresis: 100V, 4°C, 3h
 Transmembrane: 100V, 4°C, 1h
 Blocking: 5% w/v nonfat dry milk, 1×TBST, at RT with gentle shaking
 Primary antibody: 1:1000 in blocking buffer, 4°C, overnight
 Secondary antibody-HRP: 1:7000 in blocking buffer, RT, 45min
 Visualization: ECL