

Anti-VGLUT1 Rabbit pAb



WL05250

For Research Use Only. Not For Use In Diagnostic Procedures

Product Information

Product name	Anti-VGLUT1 Rabbit pAb	
Source	Rabbit	
Species reactivity	Human	
Tested applications	Western blot	1:500-1:1000

**Suggested working dilutions are given as a guide only. It is recommended that the user titrates the product for use in their own experiment using appropriate negative and positive controls.*

Molecular Wt.	62 kDa	
Pack size	50/100/200/500/1000 μ l	
Storage	Store at -20°C. Avoid freeze/thaw cycles.	
Storage buffer	Supplied in 20 mM phosphate (pH 7.5), 150 mM NaCl, 100 μ g/ml BSA, 50% glycerol and less than 0.02% sodium azide	

General Information

Background VGLUT1 is vesicle-bound, sodium-dependent phosphate transporter that is specifically expressed in the neuron-rich regions of the brain. It is preferentially associated with the membranes of synaptic vesicles and functions in glutamate transport.

Immunogen Polyclonal antibody is produced by immunizing animals with a synthetic peptide of VGLUT1.

Purification Polyclonal antibody was purified by Protein A affinity chromatography.

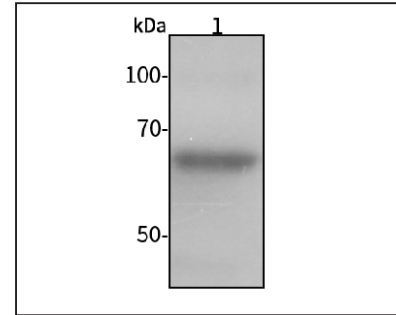
Anti-VGLUT1 Rabbit pAb



WL05250

For Research Use Only. Not For Use In Diagnostic Procedures

Product Images



Western blot-Anti-VGLUT1 pAb

Lane 1: Human A549 cell lysate 20 μ g

Separation gel: 8% polyacrylamide

Electrophoresis: 100V, 4°C, 3h

Transmembrane: 100V, 4°C, 1h

Blocking: 5% w/v nonfat dry milk, 1 \times TBST, at RT with gentle shaking

Primary antibody: 1:1000 in blocking buffer, 4°C, overnight

Secondary antibody (WLA023a) : 1:5000-1:10000, 45min

Detection: ECL, 30s-2min