

## Anti-SOS1 Rabbit pAb



WL05528

For Research Use Only. Not For Use In Diagnostic Procedures

## Product Information

<b>Product name</b>	Anti-SOS1 Rabbit pAb
<b>Source</b>	Rabbit
<b>Species reactivity</b>	Human
<b>Tested applications</b>	WB 1:500
<b>Pack size</b>	50/100/200/500/1000µl
<b>Storage</b>	Store at -20°C. <b>Avoid freeze/thaw cycles.</b>
<b>Storage buffer</b>	Supplied in 20 mM phosphate (pH 7.5), 150 mM NaCl, 100 µg/ml BSA, 50% glycerol and less than 0.02% sodium azide

## General Information

**Background** SOS1 promotes the exchange of Ras-bound GDP by GTP. EPS8, E3B1 and SOS1 form a tricomplex in vivo that exhibits RAC-specific guanine nucleotide exchange factor activity in vitro. Defects in SOS1 are the cause of gingival fibromatosis 1 (GGF1).

**Immunogen** Polyclonal antibody is produced by immunizing animals with a synthetic peptide of SOS1.

**Purification** Polyclonal antibody was purified by immunogen affinity chromatography.

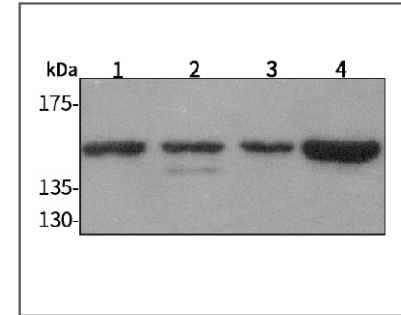
## Anti-SOS1 Rabbit pAb



WL05528

For Research Use Only. Not For Use In Diagnostic Procedures

## Product Images



## Western blot-Anti-SOS1 pAb

Lane 1: Human HeLa cell lysate  
 Lane 2: Human HEK-293 cell lysate  
 Lane 3: Human HCT116 cell lysate  
 Lane 4: Human MDA-MB-231 cell lysate  
 All lanes: Anti-SOS1 at 1:500 dilution  
 Lysates/proteins at 20-50 µg per lane.  
 Predicted band size: 152 kDa  
 Observed band size: 152 kDa