

## Anti-Cyclin A Rabbit pAb



WLH3889

For Research Use Only. Not For Use In Diagnostic Procedures

## Product Information

<b>Product name</b>	Anti-Cyclin A Rabbit pAb	
<b>Source</b>	Rabbit	
<b>Species reactivity</b>	Human, Mouse, Rat	
<b>Tested applications</b>	IHC	1:100-1:400
	IF	1:100-1:400
<b>Cellular localization</b>	Secreted and Cell membrane	
<b>Pack size</b>	50/100/200/500/1000µl	
<b>Storage</b>	Store at -20°C. <b>Avoid freeze/thaw cycles.</b>	
<b>Storage buffer</b>	Supplied in 20 mM phosphate (pH 7.5), 150 mM NaCl, 100 µg/ml BSA, 50% glycerol and less than 0.02% sodium azide	

## General Information

<b>Background</b>	While overcoming the G1/S checkpoint to commence DNA replication requires cyclin E, and traversing the G2/M checkpoint to initiate mitosis requires cyclin B to be present, cyclin A seems to be required for both S-phase and M-phase. A number of studies have described the ability of over-expressed cyclin A to accelerate the G1 to S transition causing DNA replication, and cyclin A antisense DNA can prevent DNA replication. Cyclin A availability is apparently the rate-limiting step for entry into mitosis, and cyclin A is required for completion of prophase. At late prophase, cyclin A may no longer be necessary as cdc2/cyclinB1 becomes active.
<b>Immunogen</b>	Polyclonal antibody is produced by immunizing animals with a recombinant protein of Cyclin A.
<b>Purification</b>	Polyclonal antibody was purified by Protein A affinity chromatography.

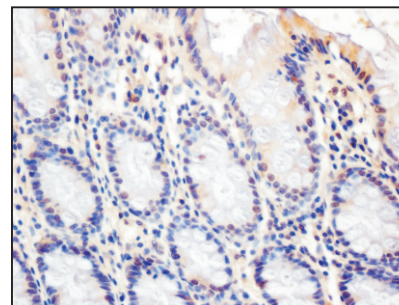
## Anti-Cyclin A Rabbit pAb



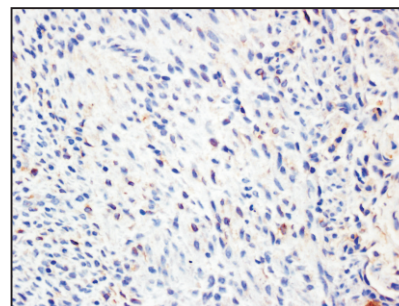
WLH3889

For Research Use Only. Not For Use In Diagnostic Procedures

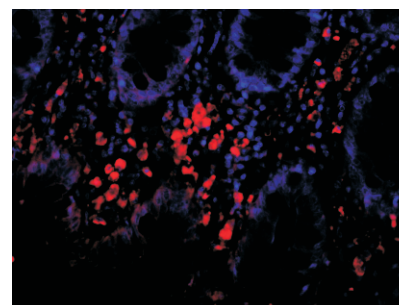
## Product Images

**Immunohistochemistry-Anti-Cyclin A pAb**

Immunohistochemical analysis of paraffin-embedded human colon cancer using anti-Cyclin A Rabbit Antibody at 1:200 dilution.  
Perform heat mediated antigen retrieval with Tris-EDTA buffer pH 9.0

**Immunohistochemistry-Anti-Cyclin A pAb**

Immunohistochemical analysis of paraffin-embedded rat uterus using anti-Cyclin A Rabbit Antibody at 1:200 dilution.  
Perform heat mediated antigen retrieval with Tris-EDTA buffer pH 9.0

**Immunofluorescence-Anti-Cyclin A pAb**

Immunofluorescence analysis of paraffin-embedded human colon cancer tissue using anti-Cyclin A Rabbit Antibody at 1:200 dilution.  
Perform heat mediated antigen retrieval with Tris-EDTA buffer pH 9.0