

## Anti-Cdc25C Rabbit pAb



WLH4161

For Research Use Only. Not For Use In Diagnostic Procedures

## Product Information

<b>Product name</b>	Anti-Cdc25C Rabbit pAb	
<b>Source</b>	Rabbit	
<b>Species reactivity</b>	Human	
<b>Tested applications</b>	IHC	1:100-1:400
<b>Cellular localization</b>	Secreted and Cell membrane	
<b>Pack size</b>	50/100/200/500/1000µl	
<b>Storage</b>	Store at -20°C. <b>Avoid freeze/thaw cycles.</b>	
<b>Storage buffer</b>	Supplied in 20 mM phosphate (pH 7.5), 150 mM NaCl, 100 µg/ml BSA, 50% glycerol and less than 0.02% sodium azide	

## General Information

<b>Background</b>	Cdc25C a member of the MPI phosphatase family. Activates the cyclin dependent kinase CDC2 by removing two phosphate groups and it is required for entry into mitosis. Shuttles between the nucleus and the cytoplasm due to nuclear localization and nuclear export signals. The protein is nuclear in the M and G1 phases of the cell cycle and moves to the cytoplasm during S and G2. Cdc25B has oncogenic properties, although its role in tumor formation has not been determined. The Cdc25 gene family consists of at least three members that share approximately 40% identity in their most conserved carboxy-terminal sequences.
<b>Immunogen</b>	Polyclonal antibody is produced by immunizing animals with a synthetic peptide of Cdc25C.
<b>Purification</b>	Polyclonal antibody was purified by immunogen affinity chromatography.

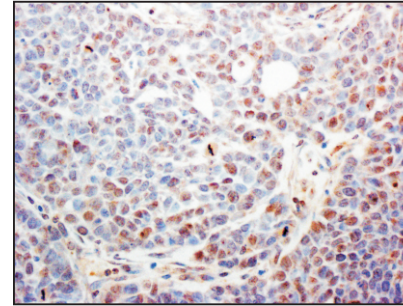
## Anti-Cdc25C Rabbit pAb



WLH4161

For Research Use Only. Not For Use In Diagnostic Procedures

## Product Images



## Immunohistochemistry-Anti-Cdc25C pAb

Immunohistochemical analysis of paraffin-embedded human BGC-823 tumor using anti-Cdc25C Rabbit Antibody at 1:200 dilution.

Perform heat mediated antigen retrieval with Tris-EDTA buffer pH 9.0