

Anti-PHOX2B Rabbit pAb



WLH4388

For Research Use Only. Not For Use In Diagnostic Procedures

Product Information

Product name	Anti-PHOX2B Rabbit pAb		
Source	Rabbit		
Species reactivity	Human		
Tested applications	Immunohistochemistry	1:100-1:400	
	Immunofluorescence	1:100-1:400	
<i>*Suggested working dilutions are given as a guide only. It is recommended that the user titrates the product for use in their own experiment using appropriate negative and positive controls.</i>			
Pack size	50/100/200/500/1000μl		
Storage	Store at -20°C. <b>Avoid freeze/thaw cycles.</b>		
Storage buffer	Supplied in 20 mM phosphate (pH 7.5), 150 mM NaCl, 100 μg/ml BSA, 50% glycerol and less than 0.02% sodium azide		

General Information

Background	PHOX2B DNA-associated is a member of the paired family of homeobox proteins localized to the nucleus. PHOX2B localizes in the nucleus and is expressed in neuroblastoma, brain and adrenal gland. The gene product is linked to enhancement of second messenger-mediated activation of the dopamine beta-hydroxylase, c-fos promoters and several enhancers, including cyclic amp-response element and serum-response element.
Immunogen	Polyclonal antibody is produced by immunizing animals with a synthetic peptide of PHOX2B.
Purification	Polyclonal antibody was purified by Protein A affinity chromatography.

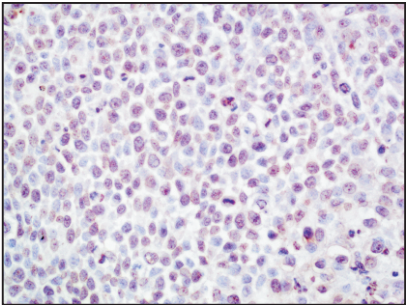
Anti-PHOX2B Rabbit pAb



WLH4388

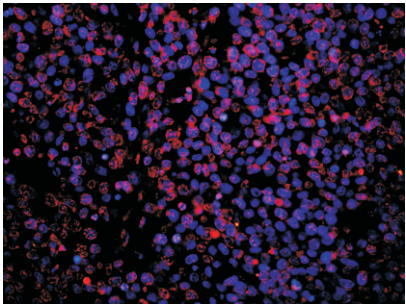
For Research Use Only. Not For Use In Diagnostic Procedures

Product Images



Immunohistochemistry-Anti-PHOX2B pAb

Sample: Human 823 tumor tissue  
Antigen retrieval: pH 9.0 Tris-EDTA buffer  
Primary antibody: 1:200, 4°C, overnight  
Secondary antibody-Biotin: 1:150, 37°C, 1h  
Streptavidin-HRP: 1:200, 37°C, 30min  
Visualization: DAB



Immunofluorescence-Anti-PHOX2B pAb

Sample: Human 823 tumor tissue  
Primary antibody: 1:200, 4°C, overnight  
Secondary antibody-CV3: 1:200, at room temperature, 1h