

Anti-PRSS8 Rabbit pAb



WLH4399

For Research Use Only. Not For Use In Diagnostic Procedures

Product Information

Product name	Anti-EAAT3 Rabbit pAb		
Source	Rabbit		
Species reactivity	Human, Mouse, Rat, Rabbit		
Tested applications	Immunohistochemistry	1:100-1:400	
	Immunofluorescence	1:100-1:400	
<i>*Suggested working dilutions are given as a guide only. It is recommended that the user titrates the product for use in their own experiment using appropriate negative and positive controls.</i>			
Pack size	50/100/200/500/1000μl		
Storage	Store at -20°C. Avoid freeze/thaw cycles.		
Storage buffer	Supplied in 20 mM phosphate (pH 7.5), 150 mM NaCl, 100 μg/ml BSA, 50% glycerol and less than 0.02% sodium azide		

General Information

Background	PRSS8 is a member of the peptidase S1 or chymotrypsin family of serine proteases. It is a heterodimer of two chains, light and heavy, which are held by a disulfide bond. This protease exhibits trypsin-like substrate specificity, cleaving protein substrates at the carboxyl terminus of lysine or arginine residues.
Immunogen	Polyclonal antibody is produced by immunizing animals with a synthetic peptide of PRSS8.
Purification	Polyclonal antibody was purified by immunoge affinity chromatography.

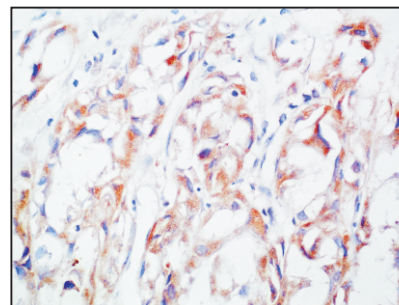
Anti-PRSS8 Rabbit pAb



WLH4399

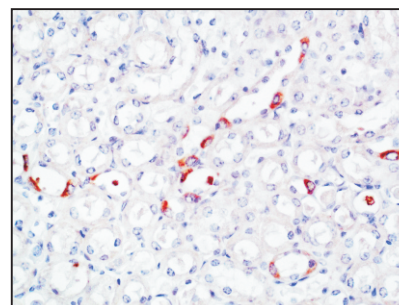
For Research Use Only. Not For Use In Diagnostic Procedures

Product Images



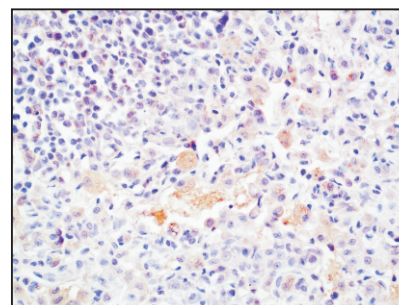
Immunohistochemistry-Anti-PRSS8 pAb

Sample: Human kidney cancer tissue
Antigen retrieval: pH 9.0 Tris-EDTA buffer
Primary antibody: 1:200, 4°C, overnight
Secondary antibody-Biotin: 1:150, 37°C, 1h
Streptavidin-HRP: 1:200, 37°C, 30min
Visualization: DAB



Immunohistochemistry-Anti-PRSS8 pAb

Sample: Mouse kidney tissue
Antigen retrieval: pH 9.0 Tris-EDTA buffer
Primary antibody: 1:200, 4°C, overnight
Secondary antibody-Biotin: 1:150, 37°C, 1h
Streptavidin-HRP: 1:200, 37°C, 30min
Visualization: DAB



Immunohistochemistry-Anti-PRSS8 pAb

Sample: Rat lung tissue
Antigen retrieval: pH 9.0 Tris-EDTA buffer
Primary antibody: 1:200, 4°C, overnight
Secondary antibody-Biotin: 1:150, 37°C, 1h
Streptavidin-HRP: 1:200, 37°C, 30min
Visualization: DAB

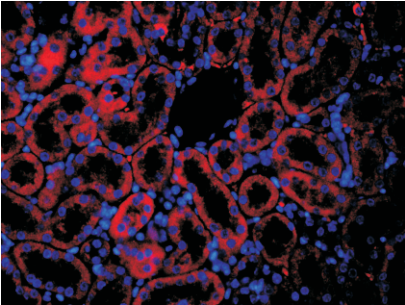
Anti-PRSS8 Rabbit pAb



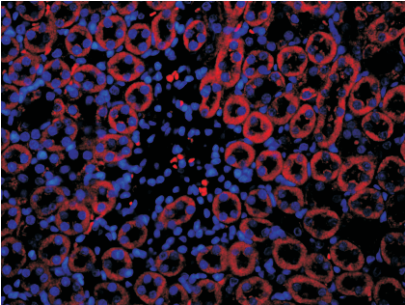
WLH4399

For Research Use Only. Not For Use In Diagnostic Procedures

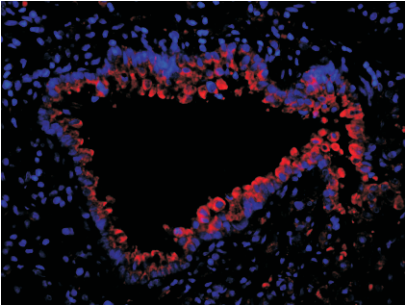
Product Information



Immunofluorescence-Anti-PRSS8 pAb
Sample: Mouse kidney tissue
Primary antibody: 1:200, 4°C, overnight
Secondary antibody-CY3: 1:200, at room temperature, 1h



Immunofluorescence-Anti-PRSS8 pAb
Sample: Rat kidney tissue
Primary antibody: 1:200, 4°C, overnight
Secondary antibody-CY3: 1:200, at room temperature, 1h



Immunofluorescence-Anti-PRSS8 pAb
Sample: Rat lung tissue
Primary antibody: 1:200, 4°C, overnight
Secondary antibody-CY3: 1:200, at room temperature, 1h

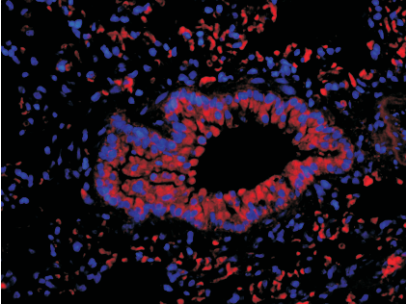
Anti-PRSS8 Rabbit pAb



WLH4399

For Research Use Only. Not For Use In Diagnostic Procedures

Product Images



Immunofluorescence-Anti-PRSS8 pAb
Sample: Rabbit lung tissue
Primary antibody: 1:200, 4°C, overnight
Secondary antibody-CY3: 1:200, at room temperature, 1h