

Anti-Cdc25A Rabbit pAb



WLH4422

For Research Use Only. Not For Use In Diagnostic Procedures

Product Information

Product name	Anti-Cdc25A Rabbit pAb	
Source	Rabbit	
Species reactivity	Rat, Rabbit	
Tested applications	IHC	1:100-1:400
Cellular localization	Secreted and Cell membrane	
Pack size	50/100/200/500/1000μl	
Storage	Store at -20°C. Avoid freeze/thaw cycles.	
Storage buffer	Supplied in 20 mM phosphate (pH 7.5), 150 mM NaCl, 100 μg/ml BSA, 50% glycerol and less than 0.02% sodium azide	

General Information

Background	CDC25A belongs to the MPI phosphatase family. It is a tyrosine protein phosphatase which functions as a dosage-dependent inducer of mitotic progression. CDC25A directly dephosphorylates CDC2 and stimulates its kinase activity.
Immunogen	Polyclonal antibody is produced by immunizing animals with a synthetic peptide of Cdc25A .
Purification	Polyclonal antibody was purified by immunogen affinity chromatography.

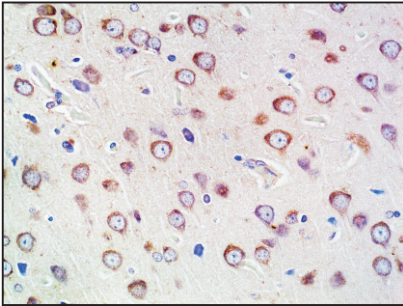
Anti-Cdc25A Rabbit pAb



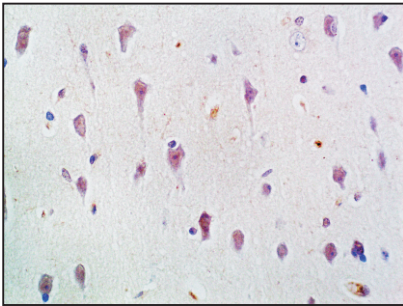
WLH4422

For Research Use Only. Not For Use In Diagnostic Procedures

Product Images



Immunohistochemistry-Anti-Cdc25A pAb
Immunohistochemical analysis of paraffin-embedded rat brain using anti-Cdc25A Rabbit Antibody at 1:200 dilution.
Perform heat mediated antigen retrieval with Tris-EDTA buffer pH 9.0



Immunohistochemistry-Anti-Cdc25A pAb
Immunohistochemical analysis of paraffin-embedded rabbit brain using anti-Cdc25A Rabbit Antibody at 1:200 dilution.
Perform heat mediated antigen retrieval with Tris-EDTA buffer pH 9.0