

## Anti-Axin 1 Rabbit pAb



WLH4728

For Research Use Only. Not For Use In Diagnostic Procedures

## Product Information

<b>Product name</b>	Anti-Axin 1 Rabbit pAb	
<b>Source</b>	Rabbit	
<b>Species reactivity</b>	Human, Mouse, Rat	
<b>Tested applications</b>	IHC	1:100-1:400
	IF	1:100-1:400
<b>Cellular localization</b>	Secreted and Cell membrane	
<b>Pack size</b>	50/100/200/500/1000μl	
<b>Storage</b>	Store at -20°C. <b>Avoid freeze/thaw cycles.</b>	
<b>Storage buffer</b>	Supplied in 20 mM phosphate (pH 7.5), 150 mM NaCl, 100 μg/ml	
	BSA, 50% glycerol and less than 0.02% sodium azide	

## General Information

<b>Background</b>	Axis inhibition protein1 (AXIN1), also called AXIN, together with AXIN2 are multidomain scaffold proteins that negatively regulate Wnt signaling. AXIN1 is likely to function as a tumor suppressor. Under UV irradiation, AXIN1-HIPK2-TP53 complex forms. The complex also controls cell growth, apoptosis and development. Like AXIN2, AXIN1 undergoes poly(ADP-ribosylation) by tankyrase TNKS and TNKS2 followed by ubiquitination by RNF146 which leads to its degradation and subsequent activation of Wnt signaling.
<b>Immunogen</b>	Polyclonal antibody is produced by immunizing animals with a synthetic peptide of Axin 1.
<b>Purification</b>	Polyclonal antibody was purified by immunogen affinity chromatography.

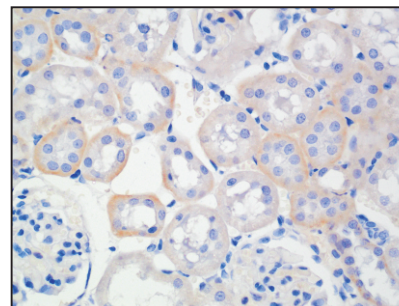
## Anti-Axin 1 Rabbit pAb



WLH4728

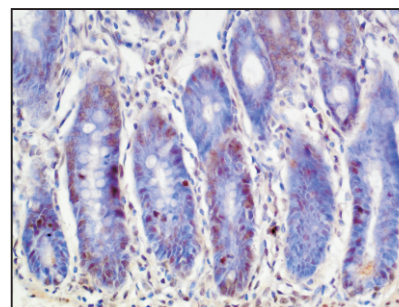
For Research Use Only. Not For Use In Diagnostic Procedures

## Product Images



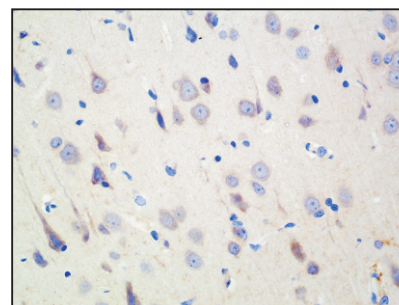
## Immunohistochemistry-Anti-Axin 1 pAb

Immunohistochemical analysis of paraffin-embedded rat kidney using anti-Axin 1 Rabbit Antibody at 1:200 dilution.  
Perform heat mediated antigen retrieval with Tris-EDTA buffer pH 9.0



## Immunohistochemistry-Anti-Axin 1 pAb

Immunohistochemical analysis of paraffin-embedded rat colon using anti-Axin 1 Rabbit Antibody at 1:200 dilution.  
Perform heat mediated antigen retrieval with Tris-EDTA buffer pH 9.0



## Immunohistochemistry-Anti-Axin 1 pAb

Immunohistochemical analysis of paraffin-embedded rat brain using anti-Axin 1 Rabbit Antibody at 1:200 dilution.  
Perform heat mediated antigen retrieval with Tris-EDTA buffer pH 9.0

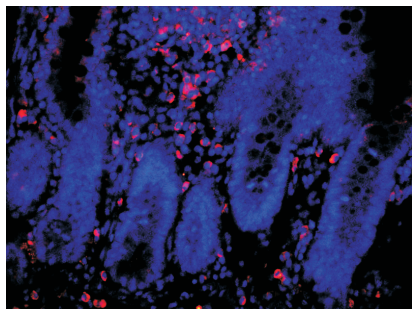


## Anti-Axin 1 Rabbit pAb

WLH4728

For Research Use Only. Not For Use In Diagnostic Procedures

### Product Information



#### Immunofluorescence-Anti-Axin 1 pAb

Immunofluorescence analysis of paraffin-embedded rat kidney using anti-Axin 1 Rabbit Antibody at 1:200 dilution.

Perform heat mediated antigen retrieval with Tris-EDTA buffer pH 9.0