

## Anti-P-STAT3 (Ser727) Rabbit pAb



WLP2412

For Research Use Only. Not For Use In Diagnostic Procedures

## Product Information

<b>Product name</b>	Anti-P-STAT3 (Ser727) Rabbit pAb		
<b>Source</b>	Rabbit		
<b>Species reactivity</b>	Human, Mouse, Rat		
<b>Tested applications</b>	Western blot	1:1000-1500	
	Immunohistochemistry	1:200	
	<i>*Suggested working dilutions are given as a guide only. It is recommended that the user titrates the product for use in their own experiment using appropriate negative and positive controls.</i>		
<b>Molecular Wt.</b>	91kDa		
<b>Pack size</b>	50/100/200/500/1000μl		
<b>Storage</b>	Store at -20°C. <b>Avoid freeze/thaw cycles.</b>		
<b>Storage buffer</b>	Supplied in 20 mM phosphate (pH 7.5), 150 mM NaCl, 100 μg/ml		
	BSA, 50% glycerol and less than 0.02% sodium azide		

## General Information

<b>Background</b>	The protein encoded by this gene is a member of the STAT protein family. In response to cytokines and growth factors, STAT family members are phosphorylated by the receptor associated kinases, and then form homo- or heterodimers that translocate to the cell nucleus where they act as transcription activators. Although early reports indicate Stat3 activation by EGF and IL-6, it has been shown that Stat3β appears to be activated by both while Stat3α is activated by EGF, but not by IL-6. Phosphorylated on serine upon DNA damage, probably by ATM or ATR. Serine phosphorylation is important for the formation of stable DNA-binding STAT3 homodimers and maximal transcriptional activity. ARL2BP may participate in keeping the phosphorylated state of STAT3 within the nucleus.
<b>Immunogen</b>	Polyclonal antibody is produced by immunizing animals with a synthetic peptide of P-STAT3 (Ser727).
<b>Purification</b>	Polyclonal antibody was purified by immunogen affinity chromatography.

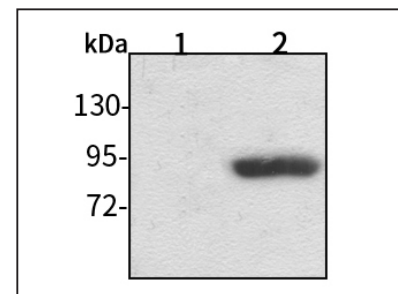
## Anti-P-STAT3 (Ser727) Rabbit pAb



WLP2412

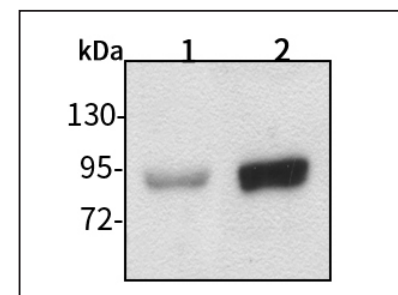
For Research Use Only. Not For Use In Diagnostic Procedures

## Product Images



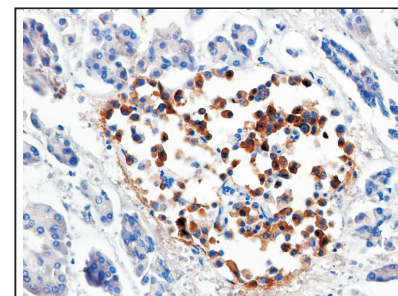
Western blot-Anti-P-STAT3 (Ser727) pAb

Lane 1: Human HepG2 cell lysate 20μg  
 Lane 2: Human HepG2 cell treated with TPA lysate 20μg  
 Separation gel: 8% polyacrylamide  
 Electrophoresis: 100V, 4°C, 3h  
 Transmembrane: 100V, 4°C, 1h  
 Blocking: 5% w/v nonfat dry milk, 1×TBST, at RT with gentle shaking  
 Primary antibody: 1:1500 in blocking buffer, 4°C, overnight  
 Secondary antibody (WLA023a) : 1:5000-1:10000, 45min  
 Visualization: ECL, 30s-2min



Western blot-Anti-P-STAT3 (Ser727) pAb

Lane 1: Mouse testicle tissue lysate 30μg  
 Lane 2: Rat stomach tissue lysate 30μg  
 Separation gel: 8% polyacrylamide  
 Electrophoresis: 100V, 4°C, 3h  
 Transmembrane: 100V, 4°C, 1h  
 Blocking: 5% w/v nonfat dry milk, 1×TBST, at RT with gentle shaking  
 Primary antibody: 1:1500 in blocking buffer, 4°C, overnight  
 Secondary antibody (WLA023a) : 1:5000-1:10000, 45min  
 Visualization: ECL, 30s-2min



Immunohistochemistry-Anti-P-STAT3 (Ser727) pAb

Sample: Human pancreas cancer tissue  
 Antigen retrieval: pH 9.0 Tris-EDTA buffer  
 Primary antibody: 1:200, 4°C, overnight  
 Secondary antibody-Biotin: 1:150, 37°C, 1h  
 Streptavidin-HRP: 1:200, 37°C, 30min  
 Color Developing: DAB

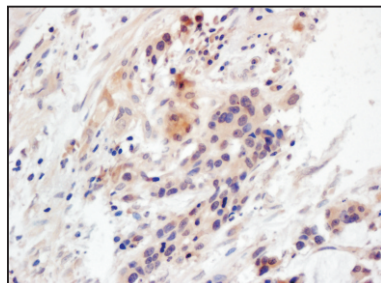
## Anti-P-STAT3 (Ser727) Rabbit pAb



For Research Use Only. Not For Use In Diagnostic Procedures

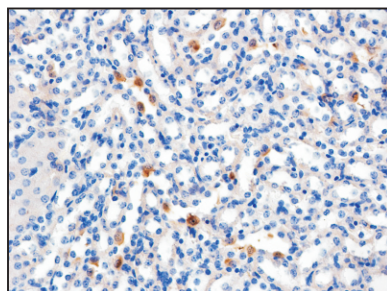
WLP2412

### Product Information



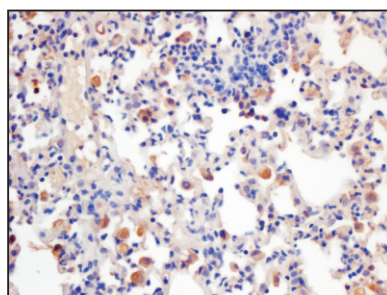
#### Immunohistochemistry-Anti-P-STAT3 (Ser727) pAb

**Sample:** Human colon cancer tissue  
**Antigen retrieval:** pH 9.0 Tris-EDTA buffer  
**Primary antibody:** 1:200, 4°C, overnight  
**Secondary antibody-Biotin:** 1:150, 37°C, 1h  
**Streptavidin-HRP:** 1:200, 37°C, 30min  
**Color Developing:** DAB



#### Immunohistochemistry-Anti-P-STAT3 (Ser727) pAb

**Sample:** Mouse kidney tissue  
**Antigen retrieval:** pH 9.0 Tris-EDTA buffer  
**Primary antibody:** 1:200, 4°C, overnight  
**Secondary antibody-Biotin:** 1:150, 37°C, 1h  
**Streptavidin-HRP:** 1:200, 37°C, 30min  
**Color Developing:** DAB



#### Immunohistochemistry-Anti-P-STAT3 (Ser727) pAb

**Sample:** Mouse lung tissue  
**Antigen retrieval:** pH 9.0 Tris-EDTA buffer  
**Primary antibody:** 1:200, 4°C, overnight  
**Secondary antibody-Biotin:** 1:150, 37°C, 1h  
**Streptavidin-HRP:** 1:200, 37°C, 30min  
**Color Developing:** DAB

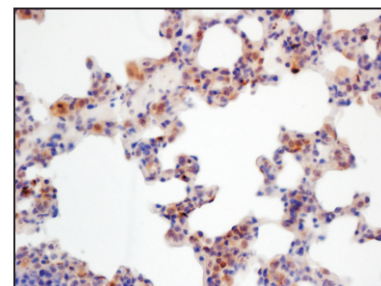
## Anti-P-STAT3 (Ser727) Rabbit pAb



For Research Use Only. Not For Use In Diagnostic Procedures

WLP2412

### Product Images



#### Immunohistochemistry-Anti-P-STAT3 (Ser727) pAb

**Sample:** Rat lung tissue  
**Antigen retrieval:** pH 9.0 Tris-EDTA buffer  
**Primary antibody:** 1:200, 4°C, overnight  
**Secondary antibody-Biotin:** 1:150, 37°C, 1h  
**Streptavidin-HRP:** 1:200, 37°C, 30min  
**Color Developing:** DAB